

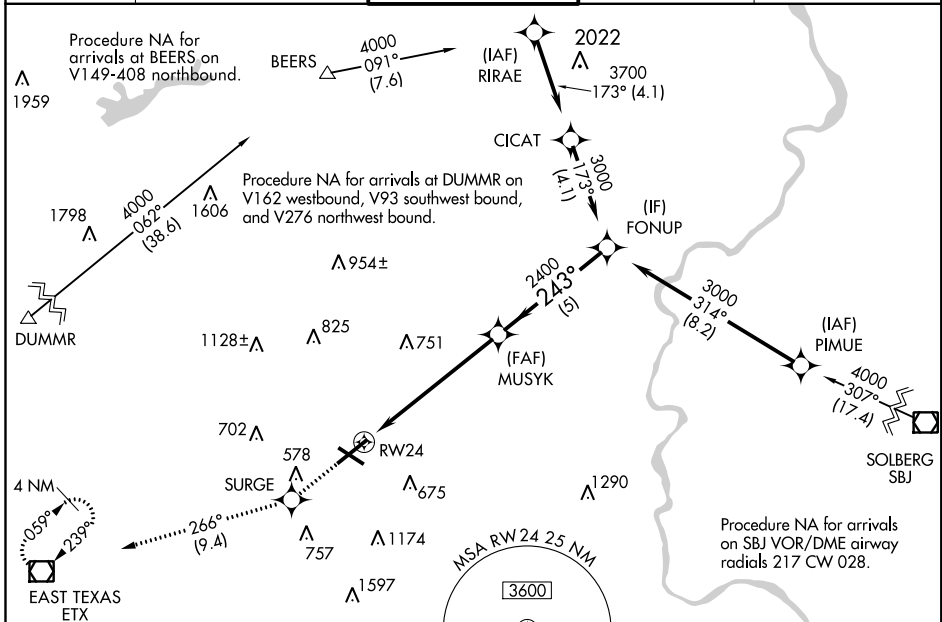
WAAS CH 40332 W24A	APP CRS 243°	Rwy Idg TDZE Apt Elev	7089 387 394
--	------------------------	-----------------------------	---

RNAV (GPS) RWY 24

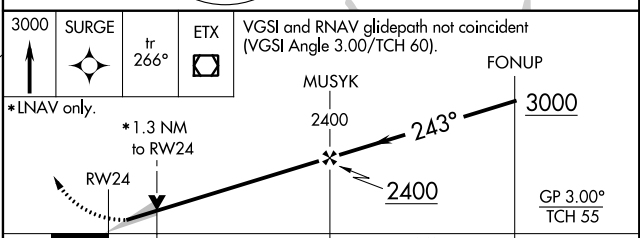
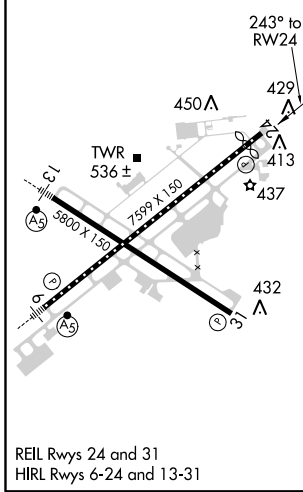
LEHIGH VALLEY INTL (A.B.E)

RNP APCH.	<p>▽ For uncompensated Baro-VNAV systems, LNAV/VNAV ▲ NA below -8°C (18°F) or above 54°C (130°F).</p>	MISSED APPROACH: Climb to 3000 direct SURGE and on track 266° to ETX VOR/DME and hold.
-----------	---	--

ATIS 126.975	ALLENTOWN APP CON 119.65 124.45 351.8	ALLENTOWN TOWER 120.5 257.95	GND CON 121.9 257.95	CLNC DEL 124.05 257.95
------------------------	---	--	--------------------------------	----------------------------------



ELEV 394	D	TDZE 387
----------	----------	----------



CATEGORY	A	B	C	D
LPV DA	587/40 200 (200-3/4)			
LNAV/VNAV DA	783-1 1/4 396 (400-1 1/4)			
LNAV MDA	860/55 473 (500-1)		860-1 3/8 473 (500-1 3/8)	
C CIRCLING	900-1 506 (600-1)		1180-2 1/4 1600-3 786 (800-2 1/4) 1206 (1300-3)	

NE-4, 21 MAY 2020 to 18 JUN 2020

NE-4, 21 MAY 2020 to 18 JUN 2020