

WAAS CH 90306 W01A	APP CRS 014°	Rwy Idg TDZE Apt Elev	6279 1049 1071
----------------------------------------	------------------------	-----------------------------	-------------------------------------------

RNAV (GPS) RWY 1

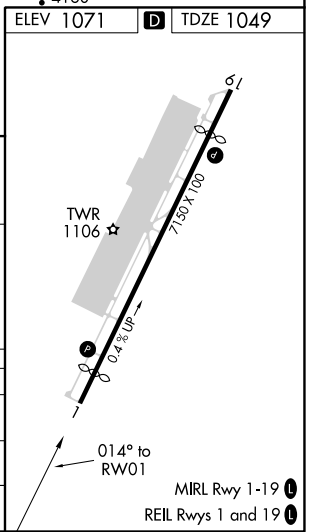
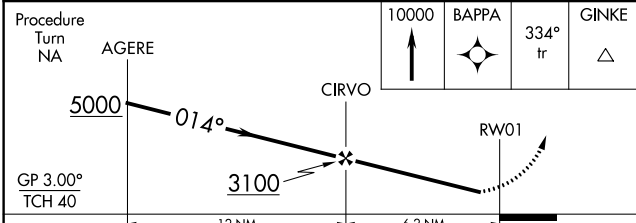
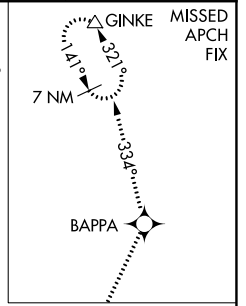
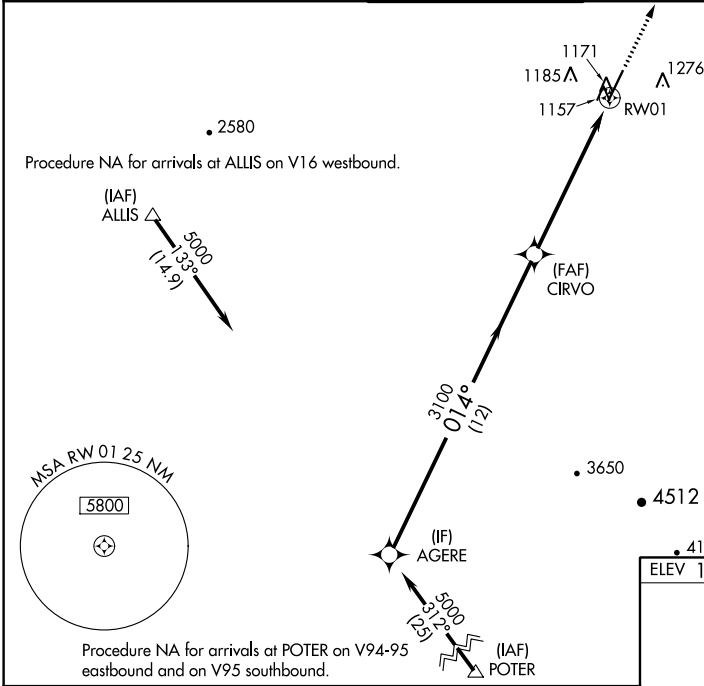
GLENDALE MUNI (GEU)

RNP APCH.

⚠ Baro-VNAV NA when using Phoenix Sky Harbor Intl altimeter setting. For uncompensated Baro-VNAV systems, LNAV/VNAV NA below -17°C or above 47°C. When local altimeter setting not received, use Phoenix Sky Harbor Intl altimeter setting: increase LPV DA to 1438 feet; increase LNAV/VNAV DA to 1517 feet and all visibilities ¼ SM; increase all MDA 60 feet and LNAV Cat C and D visibility ¼ SM. Night landing: Rwy 1, Cat C and D operational VGSi required, remain on or above VGSi glidepath until threshold. Rwy 1 helicopter visibility reduction below ¾ SM NA.

MISSED APPROACH: Climb to 10000 direct BAPPA and on 334° track to GINKE and hold, continue climb-in-hold to 10000.

ATIS 119.425	LUKE APP CON * 118.15 363.125	GLENDALE TOWER * 121.0 (CTAF) 0	GND CON 118.0	UNICOM 122.95
------------------------	-----------------------------------------	-------------------------------------------	-------------------------	-------------------------



CATEGORY	A	B	C	D
LPV DA	1378-1¼		329 (400-1¼)	
LNAV/VNAV DA	1457-1½		408 (400-1½)	
LNAV MDA	1440-1	391 (400-1)	1440-1⅛ 391 (400-1⅛)	1440-1¼ 391 (400-1¼)

SW-4, 26 MAR 2020 to 23 APR 2020

SW-4, 26 MAR 2020 to 23 APR 2020