

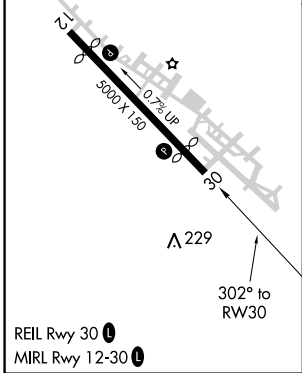
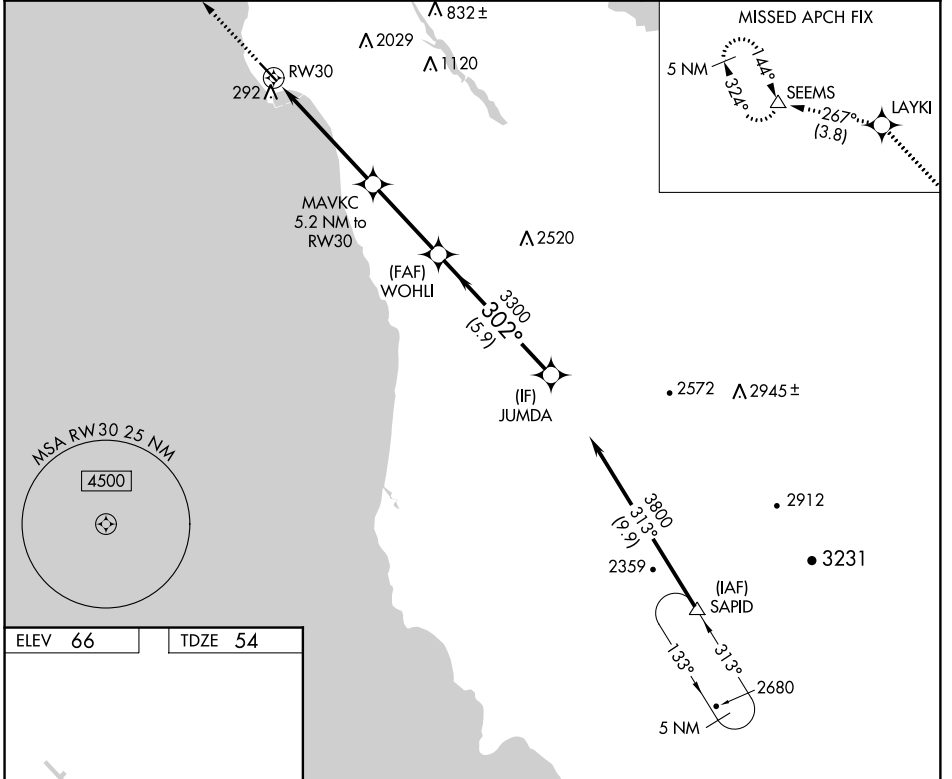
WAAS CH <b>50302</b> <b>W30A</b>	APP CRS <b>302°</b>	Rwy Idg TDZE Apt Elev	<b>4238</b> <b>54</b> <b>66</b>
--	------------------------	-----------------------------	---------------------------------------

# RNAV (GPS) RWY 30

HALF MOON BAY (HAF)

RNP APCH. ▽	MISSED APPROACH: Climb to 4000 direct LAYKI and on track 267° to SEEMS and hold, continue climb-in-hold to 4000.
----------------	--

AWOS-3 <b>127.275</b>	NORCAL APP CON <b>135.1 307.2</b>	UNICOM <b>122.8 (CTAF)</b> ①
--------------------------	--------------------------------------	---------------------------------



4000	LAYKI	tr 267°	SEEMS	VGSi and RNAV glidepath not coincident (VGSi Angle 3.00/TCH 24).	
*LNAV only	MAVKC 5.2 NM to RW30	3300	WOHLI	JUMDA	3800
*1.8 NM to RW30		2020*			GP 3.50° TCH 40
1.8 NM	3.4 NM	3.4 NM	5.9 NM		
CATEGORY	A	B	C	D	
LPV DA	381-1 327 (400-1)				
LNAV MDA	620-1 566 (600-1)		620-1½ 566 (600-1½)		

SW-2, 26 MAR 2020 to 23 APR 2020

SW-2, 26 MAR 2020 to 23 APR 2020