


LOC/DME I-EFE 109.35 Chan 30 (Y)	APP CRS 179°	Rwy Idg TDZE Apt Elev	7002 576 589
--	------------------------	-----------------------------	---

ILS or LOC RWY 18

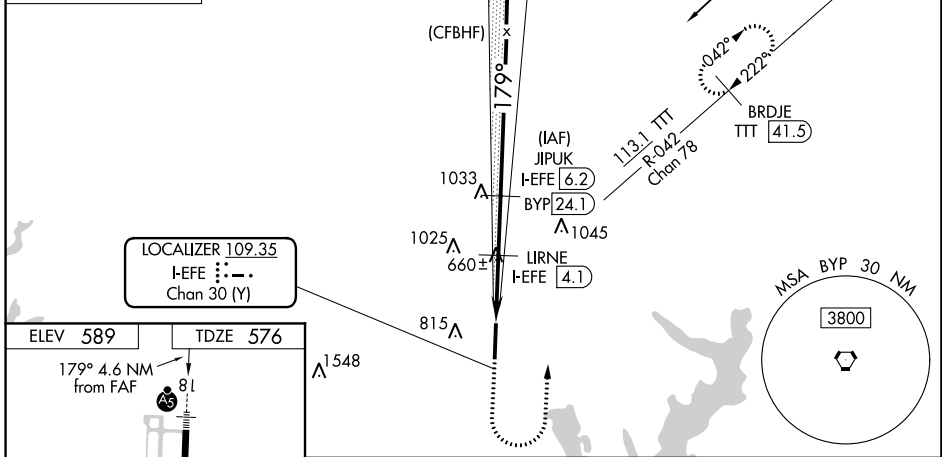
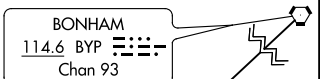
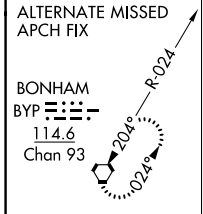
MCKINNEY NATIONAL (TKI)


DME required for procedure entry.
DME required.

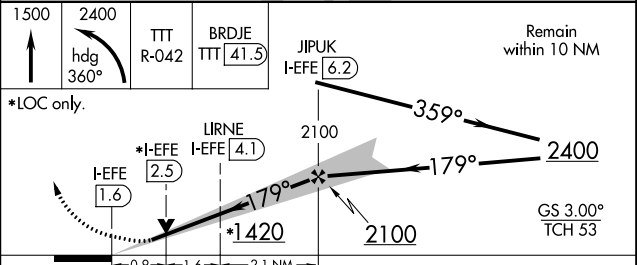
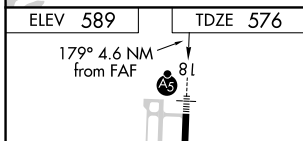
▼ VDP NA when using Dallas Love Field altimeter setting. When local altimeter setting not received, use Dallas Love Field altimeter setting and increase all DA 70 feet and all MDA 80 feet, increase S-LOC 18 Cats C/D visibility 1/2 SM, increase Circling visibility Cat C 1/2 SM, Cat D 1/4 SM. For inop ALS, increase S-LOC 18 Cats C/D visibility to 1 SM. For inop ALS when using Dallas Love Field altimeter setting, increase S-ILS 18 all Cats visibility to 1/2 SM and increase S-LOC 18 Cats C/D to 1 1/2 SM.


MALSR

MISSED APPROACH:
 Climb to 1500 then climbing left turn to 2400 on heading 360° and on TTT VOR/DME R-042 to BRDJE/TTT 41.5 DME and hold.

ASOS 119.925	REGIONAL APP CON 124.3 282.275	MCKINNEY TOWER ★ 118.825 (CTAF) 	GND CON 121.875	CLNC DEL★ (when ATCT closed) 121.35	UNICOM 122.95
------------------------	--	---	---------------------------	--	-------------------------



LOCALIZER 109.35
I-EFE 
Chan 30 (Y)



CATEGORY	A	B	C	D
S-ILS 18	776-1/2 200 (200-1/2)			
S-LOC 18	920-1/2	344 (400-1/2)	920-5/8	344 (400-5/8)
 CIRCLING	1040-1 451 (500-1)	1120-1 531 (600-1)	1200-1 3/4 611 (700-1 3/4)	1380-2 1/2 791 (800-2 1/2)

SC-2, 26 MAR 2020 to 23 APR 2020

SC-2, 26 MAR 2020 to 23 APR 2020