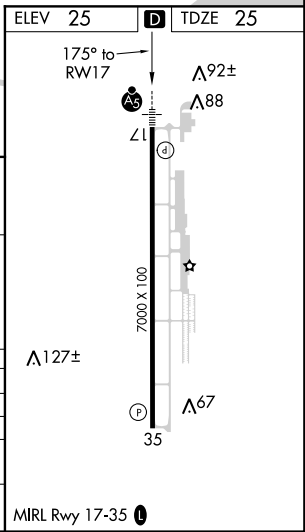
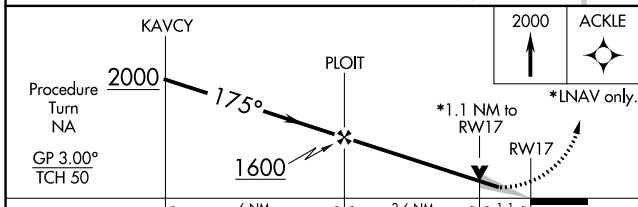
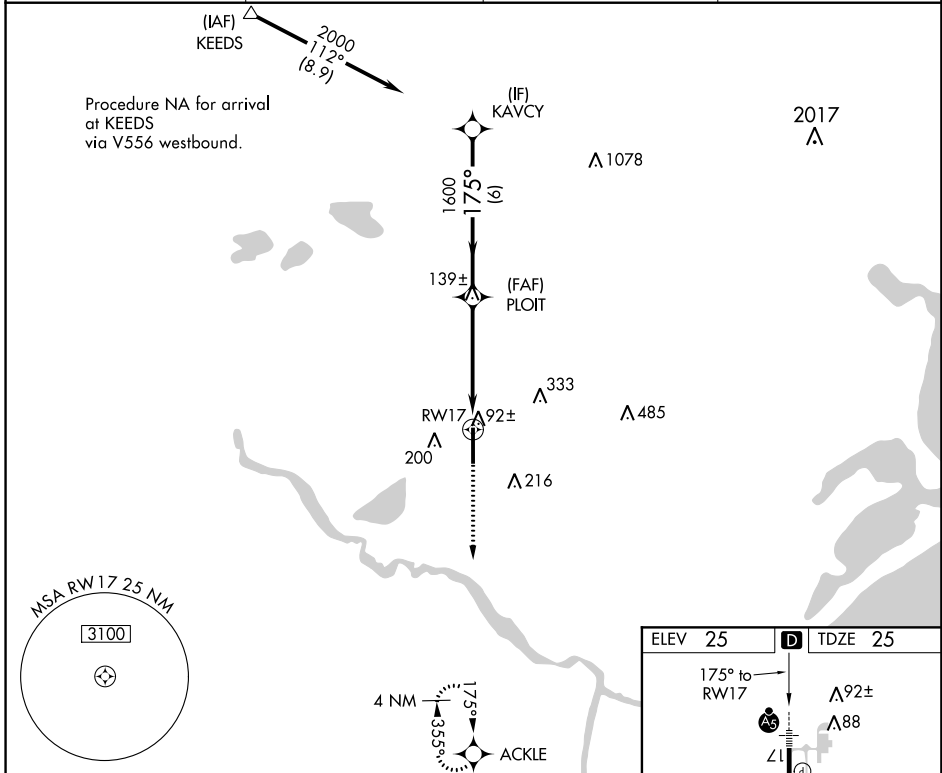


WAAS CH <b>70316</b> <b>W17A</b>	APP CRS <b>175°</b>	Rwy Idg TDZE <b>25</b> Apt Elev <b>25</b>	<b>7000</b>
--	------------------------	---	-------------

# RNAV (GPS) RWY 17

TEXAS GULF COAST RGNL (L.B.X)

<p><b>⚠</b> DME/DME RNP-0.3 NA. Baro-VNAV NA below -16°C (4°F). When local altimeter setting not received, use William P. Hobby altimeter setting and increase all DAs/MDAs 100 feet and Circling Cat D visibility ¼ SM. Baro-VNAV and VDP NA when using William P. Hobby altimeter setting. Circling NA east of Rwy 17-35. For inop MALSRS, increase LPV visibility to 1 mile all Cats, LNAV Cat D visibility to ¼ mile.</p>	<p>MALSRS</p>	<p>MISSED APPROACH: Climb to 2000 direct ACKLE and hold.</p>	
	<p>ASOS <b>119.925</b></p>	<p>HOUSTON APP CON <b>134.45 284.0</b></p>	<p>CLNC DEL <b>125.2</b></p>



CATEGORY	A	B	C	D
LPV DA		282-½	257 (300-½)	
LNAV/VNAV DA		360-¾	335 (400-¾)	
LNAV MDA		420-½	395 (400-½)	420-1 395 (400-1)
<b>C</b> CIRCLING	480-1¼ 455 (500-1¼)	500-1¼ 475 (500-1¼)	500-1½ 475 (500-1½)	620-2 595 (600-2)

SC-5, 26 MAR 2020 to 23 APR 2020

SC-5, 26 MAR 2020 to 23 APR 2020