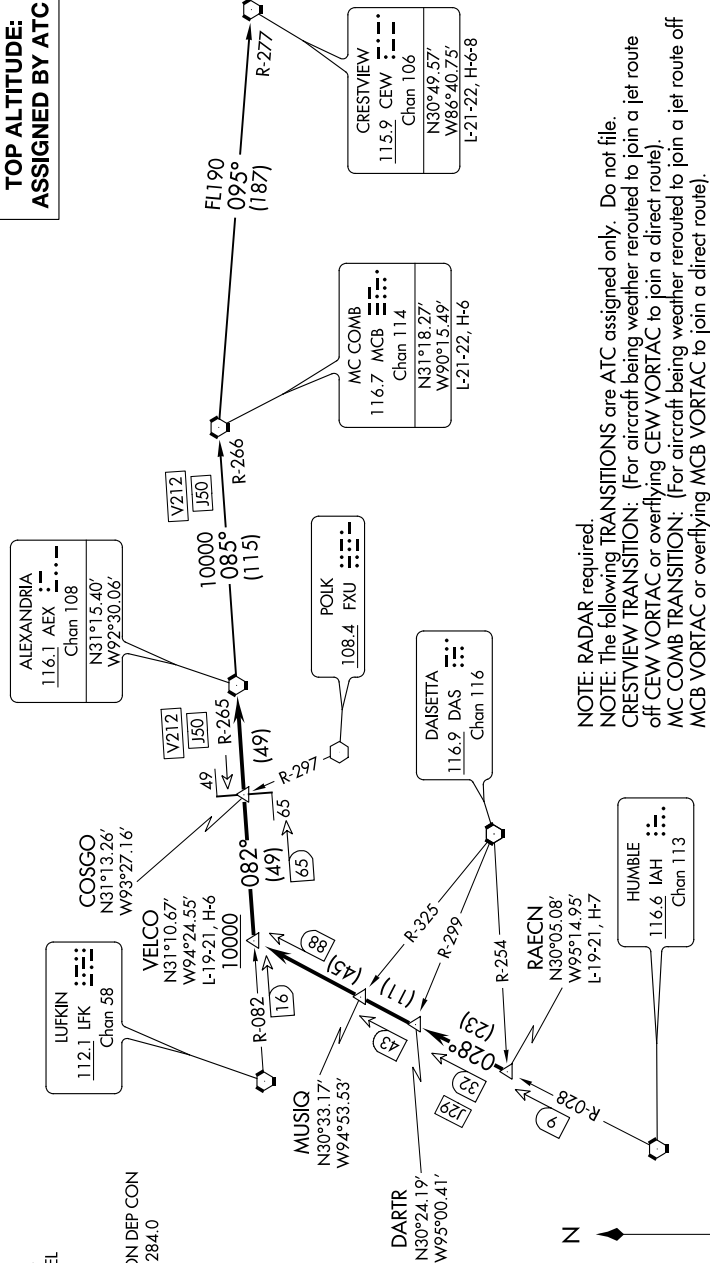


ALEXANDRIA TWO DEPARTURE

**TOP ALTITUDE:
ASSIGNED BY ATC**



CRESTVIEW
115.9 CEW
Chan 106
N30°49.57'
W86°40.75'
L-21-22, H-6-8

MC COMB
116.7 MCB
Chan 114
N31°18.27'
W90°15.49'
L-21-22, H-6

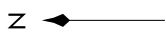
ALEXANDRIA
116.1 AEX
Chan 108
N31°15.40'
W92°30.06'

DAIBETTA
116.9 DAS
Chan 116

HUMBIE
116.6 IAH
Chan 113

NOTE: RADAR required.
NOTE: The following TRANSITIONS are ATC assigned only. Do not file.
CRESTVIEW TRANSITION: (For aircraft being weather routed to join a jet route off CEW VORTAC or overflying CEW VORTAC to join a direct route).
MC COMB TRANSITION: (For aircraft being weather routed to join a jet route off MCB VORTAC or overflying MCB VORTAC to join a direct route).

TAKEOFF MINIMUMS
Rwys 17, 35: Standard.



NOTE: Chart not to scale.

SC-5, 26 MAR 2020 to 23 APR 2020

SC-5, 26 MAR 2020 to 23 APR 2020

(NARRATIVE ON FOLLOWING PAGE)

ALEXANDRIA TWO DEPARTURE