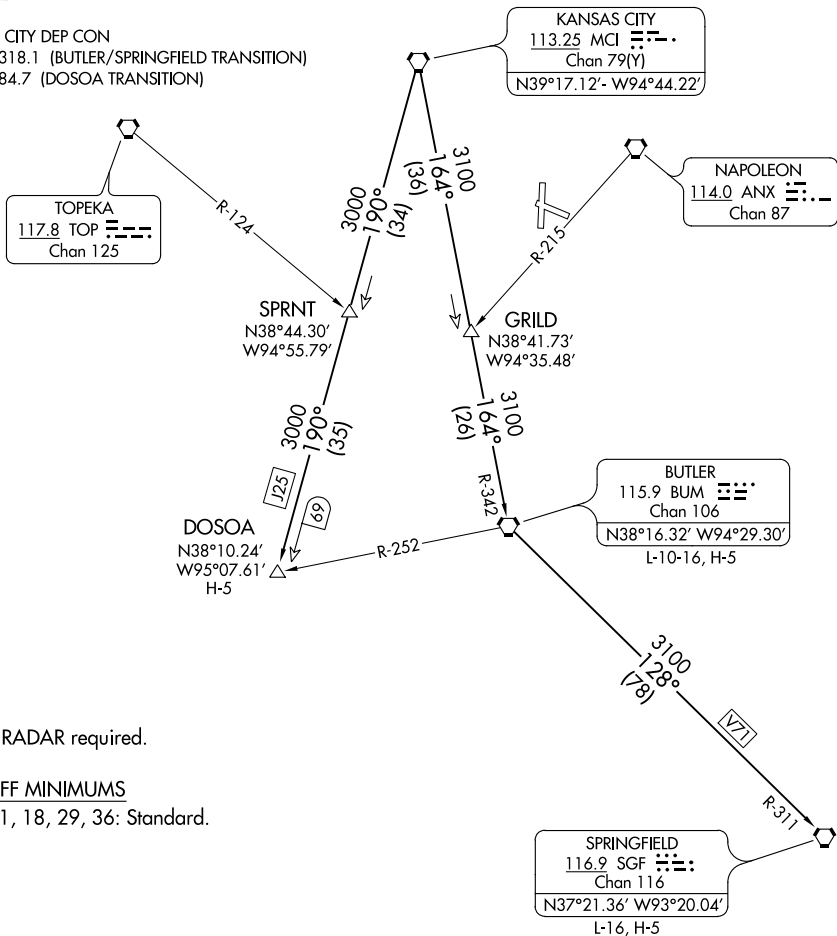


RACER SEVEN DEPARTURE

AL-6104 (FAA)

LEE'S SUMMIT MUNI (LXT)
LEE'S SUMMIT, MISSOURI

CLNC DEL
118.45
KANSAS CITY DEP CON
123.95 318.1 (BUTLER/SPRINGFIELD TRANSITION)
124.7 284.7 (DOSOA TRANSITION)



NOTE: RADAR required.

TAKEOFF MINIMUMS

Rwys 11, 18, 29, 36: Standard.

NOTE: Chart not to scale.

DEPARTURE ROUTE DESCRIPTION

TAKEOFF ALL RUNWAYS: Climb on assigned heading for RADAR vectors to appropriate route. Expect filed altitude 10 minutes after departure.

BUTLER TRANSITION (RACER7.BUM): From over MCI VORTAC on MCI R-164 and BUM R-342 to BUM VORTAC.

DOSOA TRANSITION (RACER7.DOSOA): From over MCI VORTAC on MCI R-190 to DOSOA.

SPRINGFIELD TRANSITION (RACER7.SGF): From over MCI VORTAC on MCI R-164 and BUM R-342 to BUM VORTAC, then on BUM R-128 and SGF R-311 to SGF VORTAC.

RACER SEVEN DEPARTURE

NC-3, 26 MAR 2020 to 23 APR 2020

NC-3, 26 MAR 2020 to 23 APR 2020