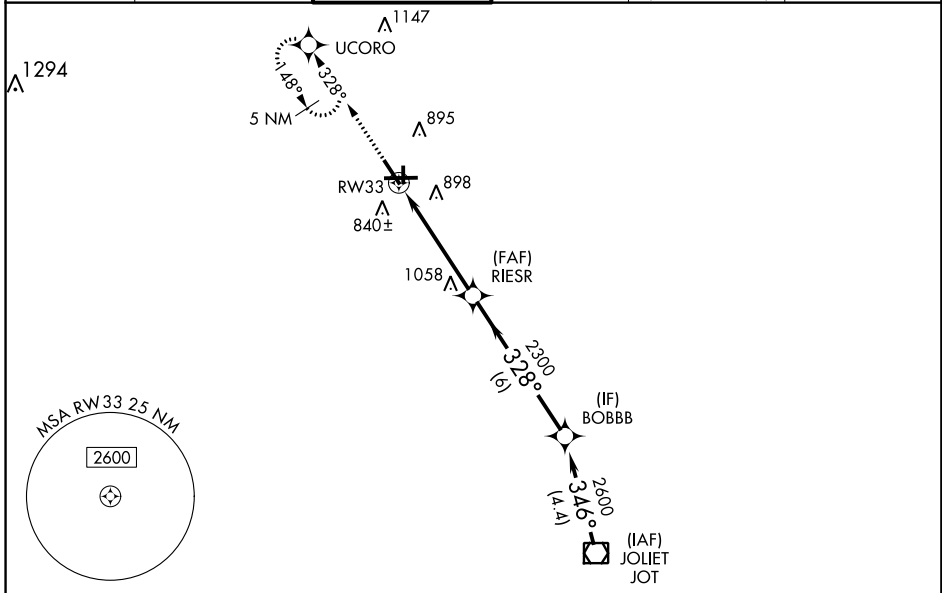


WAAS CH 49105 W33A	APP CRS 328°	Rwy Idg 5503 TDZE 705 Apt Elev 712
--	------------------------	---

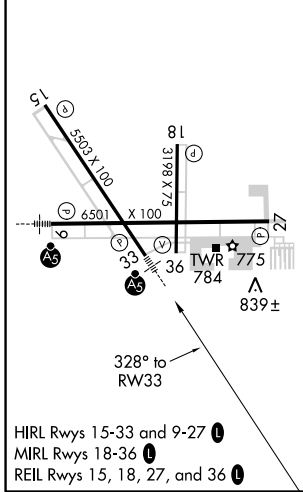
RNAV (GPS) RWY 33

AURORA MUNI (A.R.R.)

RNP APCH.		MALSRL 		MISSED APPROACH: Climb to 3000 direct UCORO and hold, continue climb-in-hold to 3000.		
For uncompensated Baro-VNAV systems, LNAV/VNAV NA below -16°C or above 54°C. For inop MALSRL, increase LPV visibility to 1/4 SM all Cnts, LNAV Cnts A/B visibility to 1 SM.	ATIS 125.85	CHICAGO APP CON 133.5 349.0	AURORA TOWER * 120.6 (CTAF) 0	GND CON 121.7	CLNC DEL 121.7 (When tower closed)	UNICOM 122.95 123.5



ELEV 712	TDZE 705
----------	----------



Procedure NA for arrival on JOT VOR/DME airway radials 314 CW 328.

3000 UCORO	JOT VOR/DME			
*LNAV only.	RIESR	BOBBB	JOT VOR/DME	
	RW33	2300	2600	2600
	*1.3 NM to RW33	328°	346°	2600
	1.3 NM	3.5 NM	6 NM	4.4 NM
CATEGORY	A	B	C	D
LPV DA	1042-3/4		337 (400-3/4)	
LNAV/VNAV DA	1194-1 1/4		489 (500-1 1/4)	
LNAV MDA	1140-3/4		435 (500-3/4)	
			1140-1 435 (500-1)	
<input checked="" type="checkbox"/> CIRCLING	1200-1 488 (500-1)		1200-1 1/2 488 (500-1 1/2)	
			1320-2 608 (700-2)	

EC-3, 26 MAR 2020 to 23 APR 2020

EC-3, 26 MAR 2020 to 23 APR 2020