

WAAS CH 77704 W23A	APP CRS 230°	Rwy ldg 11500 TDZE 87 Apt Elev 93
--	------------------------	--

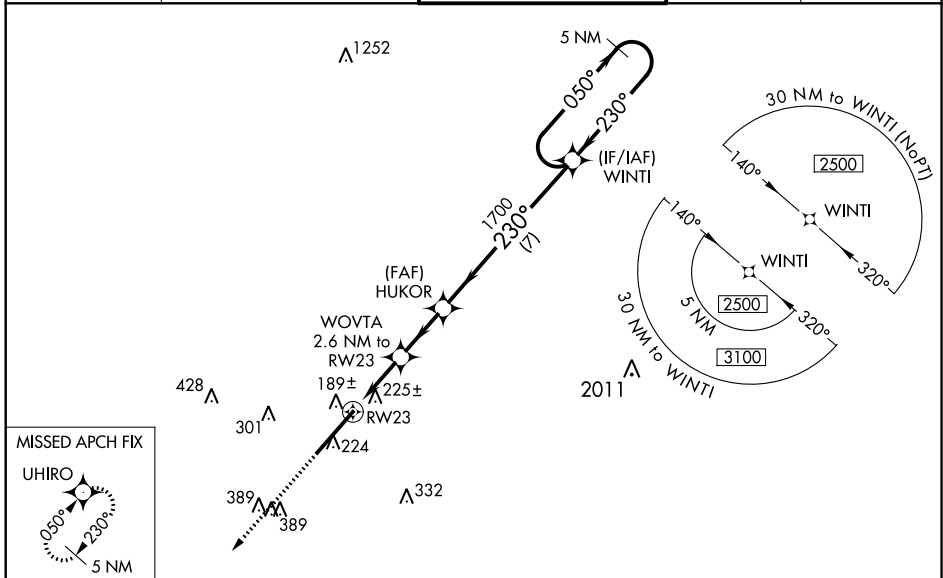
RNAV (GPS) RWY 23

KINSTON RGNL JETPORT AT STALLINGS FIELD (ISO)

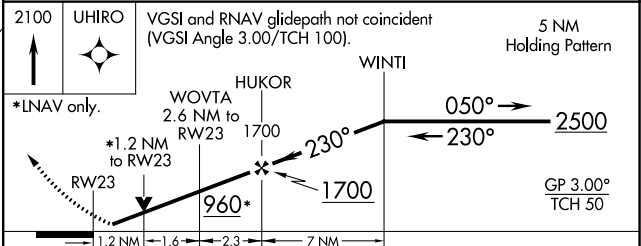
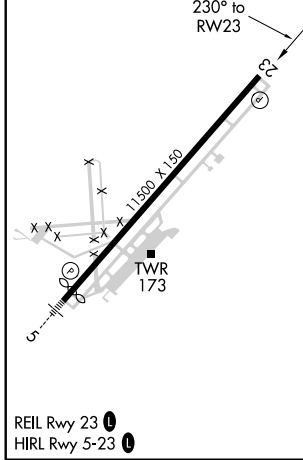
⚠ Baro-VNAV NA when using Seymour Johnson AFB altimeter setting. For uncompensated Baro-VNAV systems, LNAV/VNAV NA below -15°C (5°F) or above 54°C (130°F). DME/DME RNP-0.3 NA. VDP NA with Seymour Johnson AFB altimeter setting. Rwy 23 helicopter visibility reduction below 3/4 SM NA. When local altimeter setting not received, use Seymour Johnson AFB altimeter setting and increase LPV DA to 432, LNAV/VNAV DA to 413, and all MDA 60 feet. Increase LPV all Cats and LNAV Cats C and D visibility 1/8 mile, and increase LNAV/VNAV all Cats and Circling Cat D visibility 1/4 mile.

⚠ MISSED APPROACH: Climb to 2100 direct UHIRO and hold.

AWOS-3 132.75	SEYMOUR JOHNSON APP CON * 127.3 273.6	KINSTON TOWER * 120.6 (CTAF) 335.55	GND CON 121.9	UNICOM 122.95
-------------------------	---	---	-------------------------	-------------------------



ELEV 93	TDZE 87
----------------	----------------



CATEGORY	A	B	C	D
LPV DA	390-1 303 (300-1)			
LNAV/VNAV DA	437-1 1/8 350 (400-1 1/8)			
LNAV MDA	540-1 453 (500-1)	540-1 3/4 453 (500-1 3/8)		
CIRCLING	580-1 487 (500-1)	700-1 3/4 607 (700-1 3/4)	740-2 647 (700-2)	

RNAV (GPS) RWY 23

SE-2, 26 MAR 2020 to 23 APR 2020

SE-2, 26 MAR 2020 to 23 APR 2020