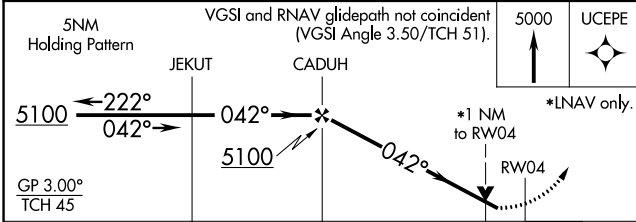
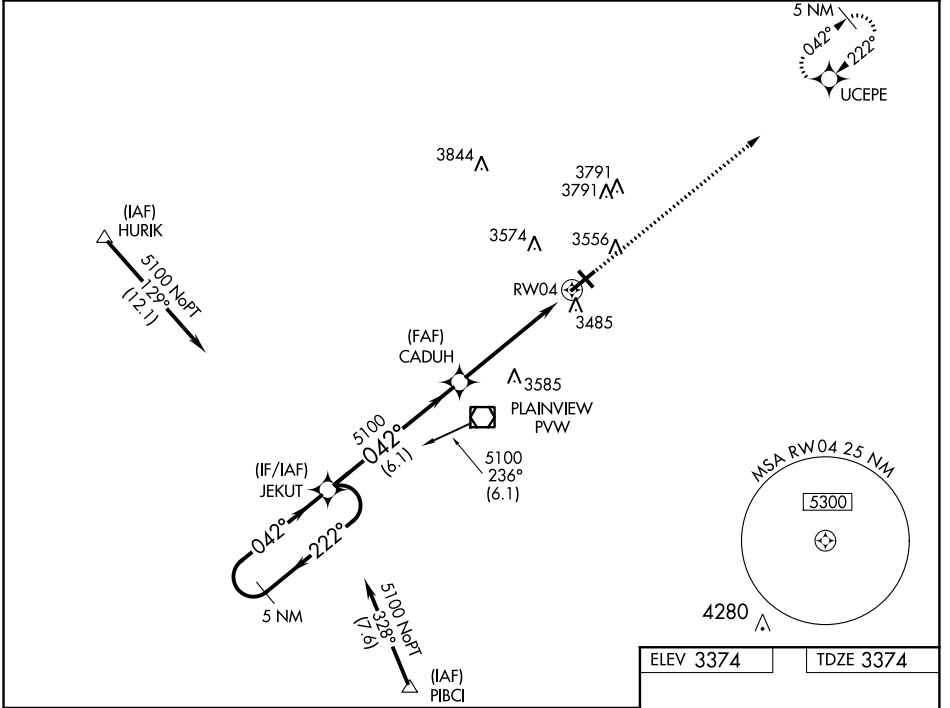


| | | |
|--|------------------------|---|
| WAAS CH 53302 W04A | APP CRS 042° | Rwy Idg 5997 TDZE 3374 Apt Elev 3374 |
|--|------------------------|---|

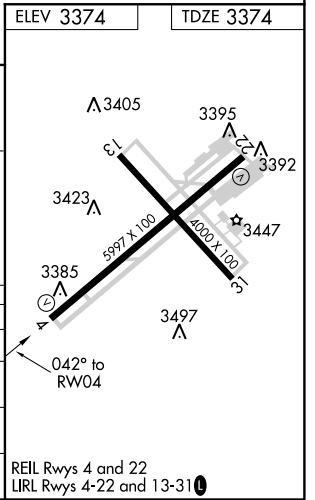
RNAV (GPS) RWY 4

HALE COUNTY (PVW)

| | | | | | |
|------------------------|---------------------------------------|---|---------------------------------|---|--|
| RNP APCH. | | <p>For uncompensated Baro-VNAV systems, LNAV/VNAV NA below -21°C or above 42°C. VDP and Baro-VNAV NA when using Lubbock altimeter setting. Rwy 4 helicopter visibility reduction below 3/4 SM NA. When local altimeter setting is not received, use Lubbock altimeter setting: increase all DA 83 feet and increase all LPV and LNAV/VNAV visibility 1/4 mile, increase all MDA 100 feet and LNAV Cat C/D and Circling Cat C visibility 1/4 mile.</p> | | <p>MISSED APPROACH: Climb to 5000, direct UCEPE and hold.</p> | |
| ASOS 119.675 | LUBBOCK APP CON 119.2 351.8 | CLNC DEL 121.7 | UNICOM 123.0 (CTAF) 0 | | |



| | | | | |
|--------------|-------------------------------|-------------------------------|-------------------------------|-----------------------|
| CATEGORY | A | B | C | D |
| LPV DA | 3624-1 | | 250 (300-1) | |
| LNAV/VNAV DA | 3730-1 1/4 | | 356 (400-1 1/4) | |
| LNAV MDA | 3800-1 | 426 (500-1) | 3800-1 1/4 | 426 (500-1 1/4) |
| CIRCLING | 3920-1 1/4 546 (600-1 1/4) | 3940-1 1/4 566 (600-1 1/4) | 3940-1 1/2 566 (600-1 1/2) | 3940-2 566 (600-2) |



SC-2, 26 MAR 2020 to 23 APR 2020

SC-2, 26 MAR 2020 to 23 APR 2020