

APP CRS 328°	Rwy Idg 5256
	TDZE 933
	Apt Elev 942

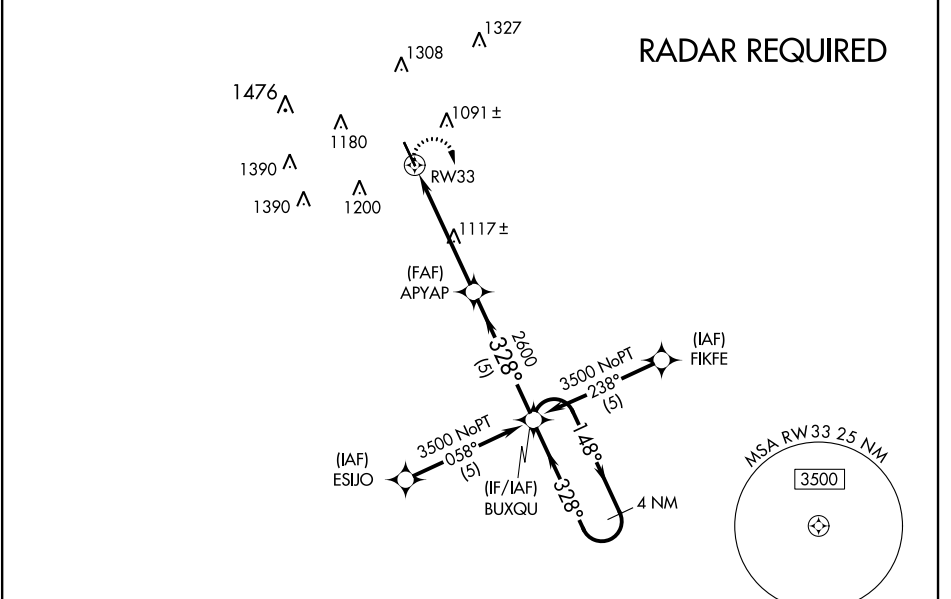
RNAV (GPS) RWY 33

GARNER FIELD (UVA)

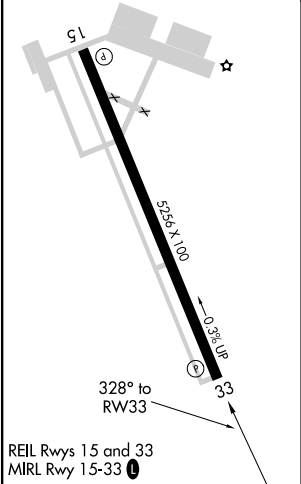
⚠ When local altimeter setting not received, use South Texas Rgnl at Hondo altimeter setting and increase all MDA 100 feet and increase LNAV Cat C and D and Circling Cat C visibility ¼ mile. DME/DME RNP-0.3 NA.

MISSED APPROACH:
Climbing right turn to 3500 direct BUXQU WP and hold.

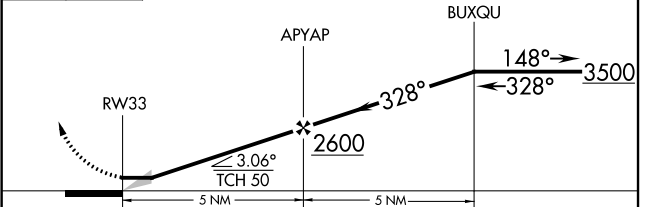
AWOS-3 124.175	HOUSTON CENTER 134.95 269.4	UNICOM 122.8 (CTAF) 0
--------------------------	---------------------------------------	---------------------------------



ELEV 942	TDZE 933
-----------------	-----------------



3500 BUXQU VGSi and descent angle not coincident (VGSi Angle 3.00/TCH 35). **4 NM Holding Pattern**



CATEGORY	A	B	C	D
GLS DA	NA			
LNAV/VNAV DA	NA			
LNAV MDA	1380-1 447 (500-1)	1380-1¼ 447 (500-1¼)	1380-1½ 447 (500-1½)	1380-1½ 447 (500-1½)
CIRCLING	1380-1 438 (500-1)	1460-1 518 (600-1)	1460-1½ 518 (600-1½)	1500-2 558 (600-2)

SC-3, 26 MAR 2020 to 23 APR 2020

SC-3, 26 MAR 2020 to 23 APR 2020