

TACAN Y RWY 15

TACAN BAB Chan 23	APCH CRS 153°	Rwy ldg 12,001	TDZE 113	Arprt Elev 113
----------------------	------------------	-------------------	-------------	-------------------

AL-771 (USAF)

BEALE AFB (KBAB)

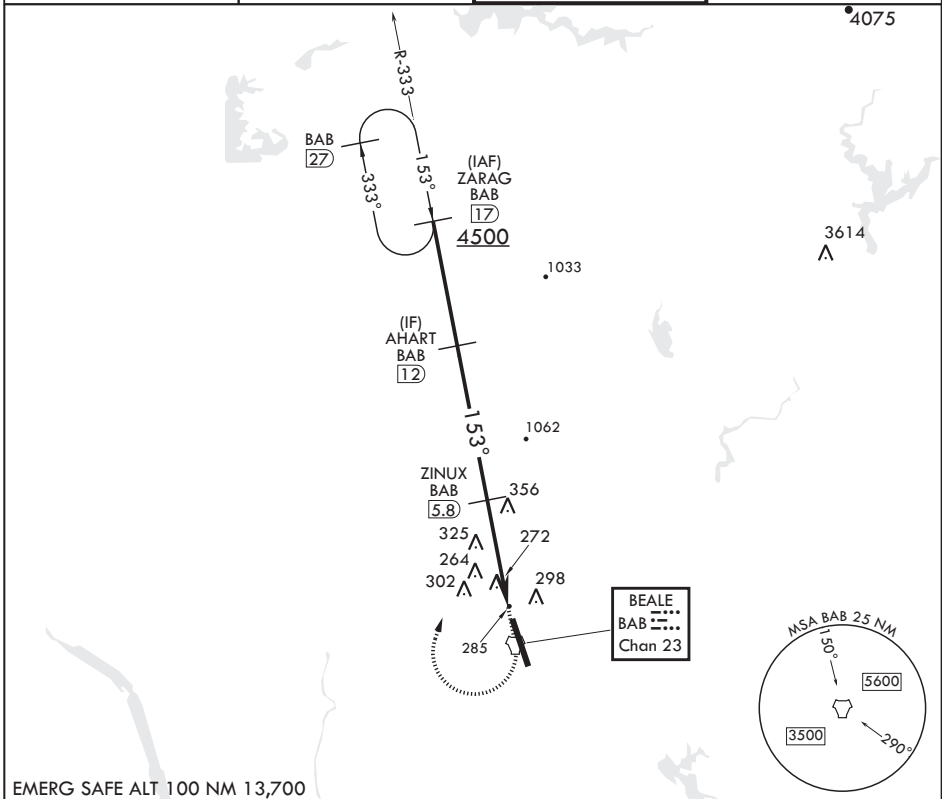
▼ * When ALS inop, increase CAT AB RVR to 55 and vis to 1 mile, CAT CDE vis to 1 1/2 miles.
 ** Circling not authorized E of Rwy 15-33.

ALSF-1

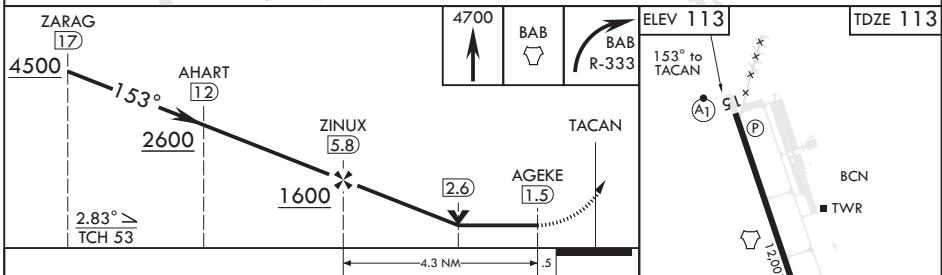


MISSED APPROACH: Climb to 4700 direct to BAB TACAN. Turn right to intercept BAB R-333 to ZARAG and hold, continue climb in hold to 4700.

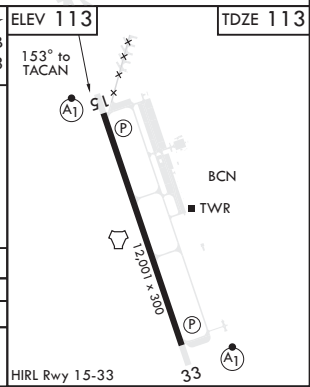
ATIS* 124.55 273.5	NORCAL APP CON 125.4 259.1	TOWER* 119.4 284.75	GND CON 121.6 257.75
-----------------------	-------------------------------	------------------------	-------------------------



EMERG SAFE ALT 100 NM 13,700



CATEGORY	A	B	C	D	E
S-15*	640/24 527 (600-1/2)		640/55 527 (600-1)		
CIRCLING**	640-1 527 (600-1)		640-1 1/2 527 (600-1 1/2)	680-2 567 (600-2)	840-2 1/2 727 (800-2 1/2)



TACAN Y RWY 15

SW-2, 26 MAR 2020 to 23 APR 2020

SW-2, 26 MAR 2020 to 23 APR 2020