

LOC/DME I-TBQ <b>110.1</b> Chan <b>38</b>	APP CRS <b>335°</b>	Rwy Idg <b>6431</b> TDZE <b>644</b> Apt Elev <b>644</b>
-------------------------------------------------	------------------------	---------------------------------------------------------------

# ILS or LOC RWY 33

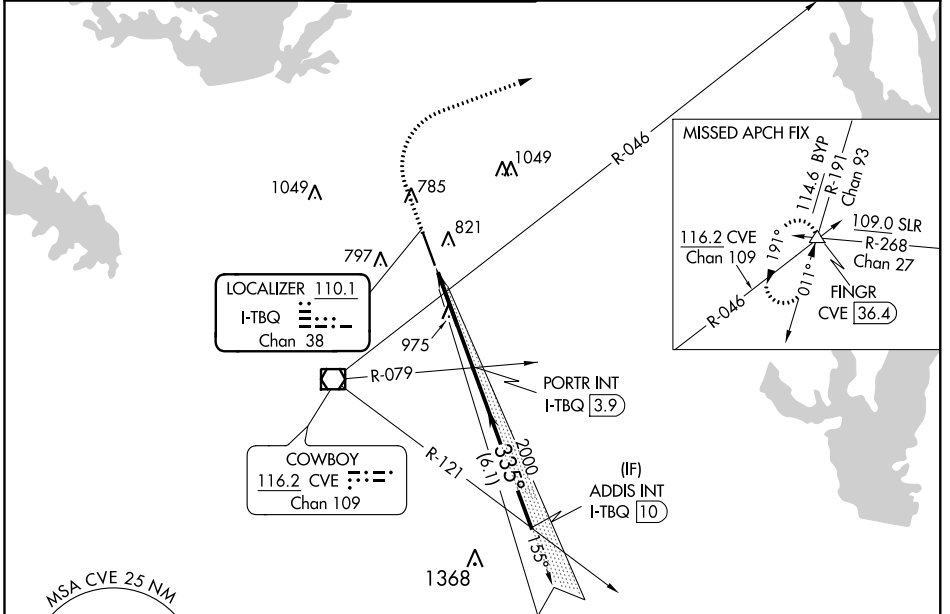
ADDISON (ADS)

RADAR required for procedure entry.

**▼** Rwy 33 helicopter visibility reduction below ¼ SM NA. When local altimeter setting not received, use Dallas-Love Field altimeter setting and increase all DA 39 feet and MDA 40 feet, increase S-LOC 33 Cat C/D visibility ¼ SM.

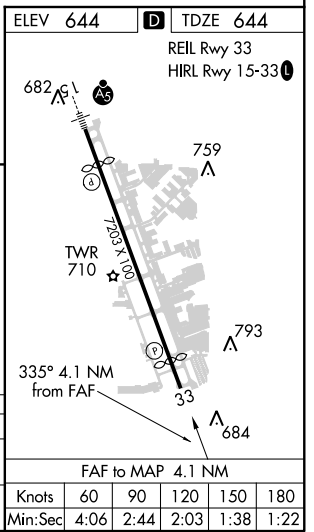
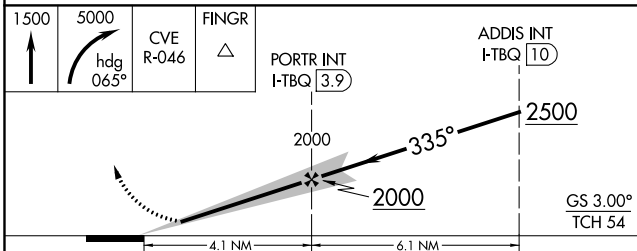
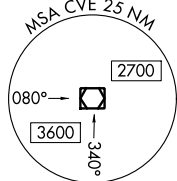
MISSED APPROACH: Climb to 1500 then climbing right turn to 5000 via heading 065° and CVE VOR/DME R-046 to FINGR INT/CVE 36.4 DME and hold.

ATIS <b>133.4</b>	REGIONAL APP CON <b>124.3 282.275</b>	ADDISON TOWER ★ <b>126.0</b> (CTAF) <b>239.0</b>	GND CON <b>121.6</b>	CLNC DEL <b>119.55</b>	UNICOM <b>122.95</b>
----------------------	------------------------------------------	-----------------------------------------------------	-------------------------	---------------------------	-------------------------



SC-2, 26 MAR 2020 to 23 APR 2020

SC-2, 26 MAR 2020 to 23 APR 2020



CATEGORY	A	B	C	D
S-ILS 33	894-1 250 (300-1)			
S-LOC 33	1240-1 596 (600-1)	1240-1½ 596 (600-1½)	1240-1¾ 596 (600-1¾)	

FAF to MAP 4.1 NM					
Knots	60	90	120	150	180
Min:Sec	4:06	2:44	2:03	1:38	1:22