

RNAV (GPS) RWY 17L

WILEY POST (PWA)

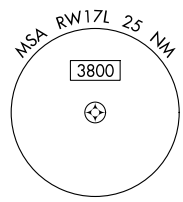
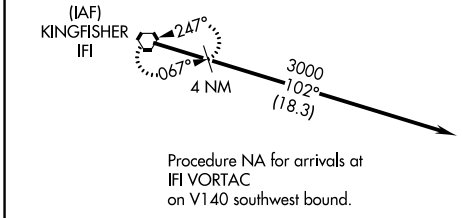
WAAS CH 72737 W17A	APP CRS 175°	Rwy ldg TDZE Apt Elev	6844 1291 1300
--	------------------------	-----------------------------	---

Baro-VNAV NA when using Will Rogers World altimeter setting. For uncompensated Baro-VNAV systems, LNAV/VNAV NA below -13°C (9°F) or above 54°C (130°F). When local altimeter setting not received, use Will Rogers World altimeter setting: Increase all DA 21 feet and all MDA 40 feet. Increase LNAV/VNAV all Cats visibility 1/8 mile and LNAV Cat C/D and Circling Cat C visibility 1/4 mile. DME/DME RNP-0.3 NA. VDP NA when using Will Rogers World altimeter setting.

MALS

MISSED APPROACH:
Climb to 1700 then climbing right turn to 3400 direct IFI VORTAC and hold.

ATIS 128.725	OKE CITY APP CON 124.6 266.8	WILEY POST TOWER ★ 126.9 (CTAF) 306.9	GND CON 121.7	UNICOM 122.95
------------------------	--	--	-------------------------	-------------------------



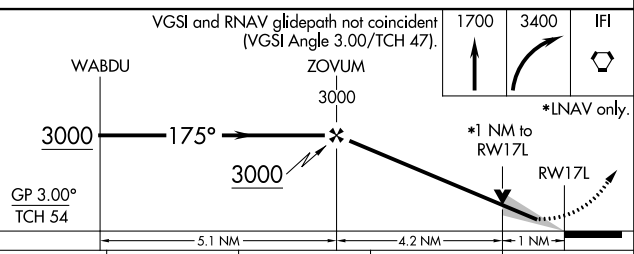
SC-1, 26 MAR 2020 to 23 APR 2020

SC-1, 26 MAR 2020 to 23 APR 2020

ELEV 1300 TDZE 1291

175° to RW17L

REIL Rwy 17R and 35L
MIRL Rwy 13-31 and 17R-35L
HIRL Rwy 17L-35R



CATEGORY	A	B	C	D
LPV DA		1491-1/2	200 (200-1/2)	
LNAV/VNAV DA		1590-1/2	299 (300-1/2)	
LNAV MDA	1660-1/2	369 (400-1/2)	1660-5/8	369 (400-5/8)
CIRCLING	1780-1	480 (500-1)	1880-1 1/2 580 (600-1 1/2)	1880-2 580 (600-2)