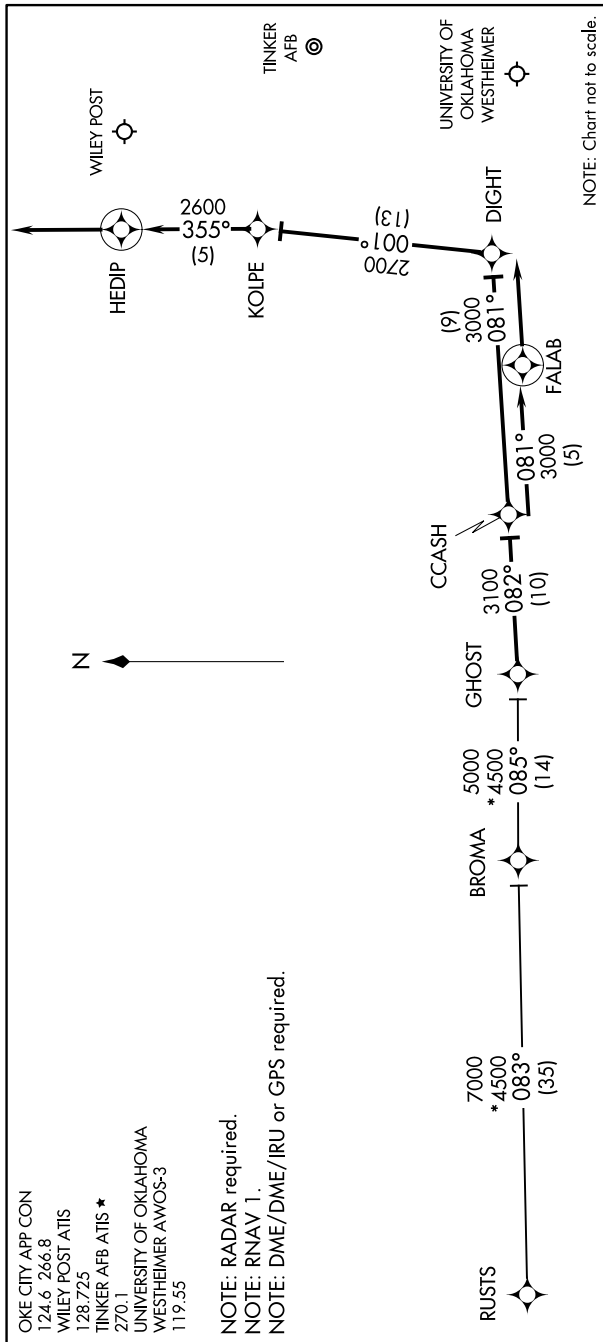


CCASH ONE ARRIVAL (RNAV)

OKLAHOMA CITY, OKLAHOMA

SC-1, 26 MAR 2020 to 23 APR 2020



OKE CITY APP CON
124.6 266.8
WILEY POST ATIS
128.725
TINKER AFB ATIS *
270.1
UNIVERSITY OF OKLAHOMA
WESTHEIMER AWOS-3
119.55

NOTE: RADAR required.
NOTE: RNAV 1.
NOTE: DME/DME/IRU or GPS required.

ARRIVAL ROUTE DESCRIPTION

BROMA TRANSITION (BROMA.CCASH1):
RUSTS TRANSITION (RUSTS.CCASH1):

From GHOST on track 082° to CCASH.

LANDING OUN/TIK: From CCASH on track 081° to FALAB, then on track 081°. Expect radar vectors to final approach course.

LANDING PWA RW17L: From CCASH on track 081° to DIGHT, then on track 001° to KOLPE, then on track 355° to HEDIP, then on track 355°. Expect radar vectors to final approach course.

LANDING PWA RW35R: From CCASH on track 081° to FALAB, then on track 081°. Expect radar vectors to final approach course.

SC-1, 26 MAR 2020 to 23 APR 2020

CCASH ONE ARRIVAL (RNAV)

OKLAHOMA CITY, OKLAHOMA