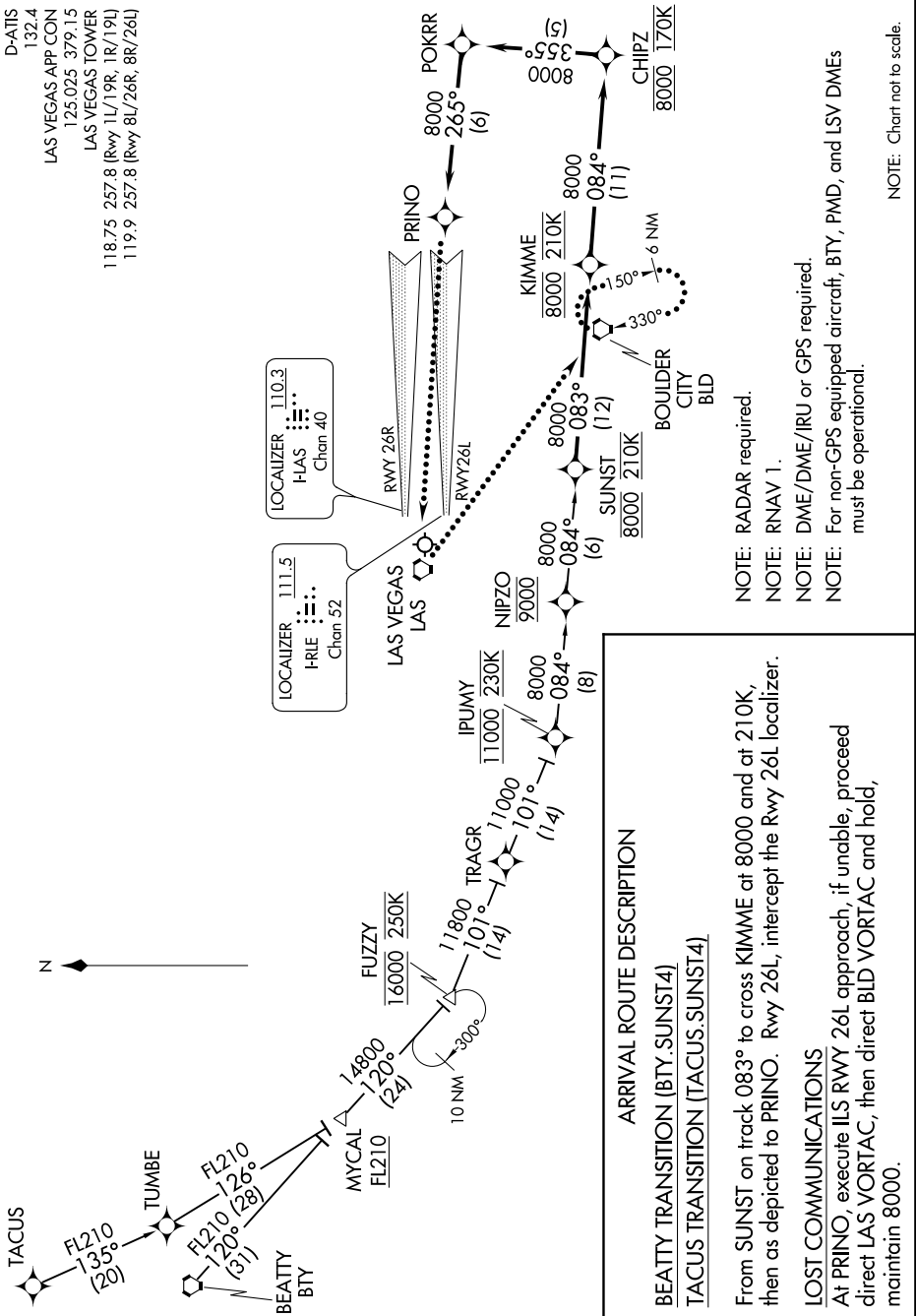


# SUNST FOUR ARRIVAL (RNAV)

AL-662 (FAA)

MC CARRAN INTL (LAS)  
LAS VEGAS, NEVADA

D-ATIS 132.4  
 LAS VEGAS APP CON 125.025 379 1.5  
 LAS VEGAS TOWER 118.75 257.8 (Rwy 1L/19R, 1R/19L)  
 119.9 257.8 (Rwy 8L/26R, 8R/26L)



NOTE: RADAR required.  
 NOTE: RNAV 1.  
 NOTE: DME/DME/IRU or GPS required.  
 NOTE: For non-GPS equipped aircraft, BTY, PMD, and LSV DMEs must be operational.

NOTE: Chart not to scale.

# SUNST FOUR ARRIVAL (RNAV)