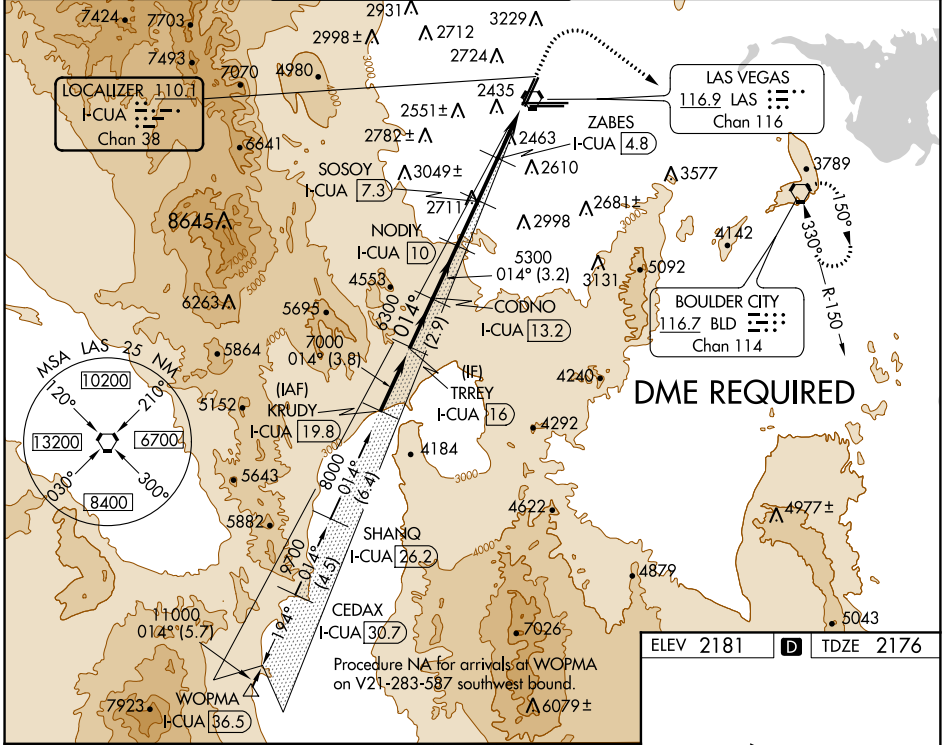


LOC/DME I- CUA	APP CRS	Rwy Idg TDZE	8401
110.1	014°	Apt Elev	2176
Chan 38			2181

ILS or LOC RWY 1L

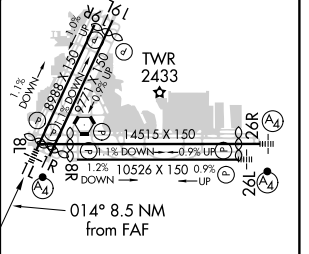
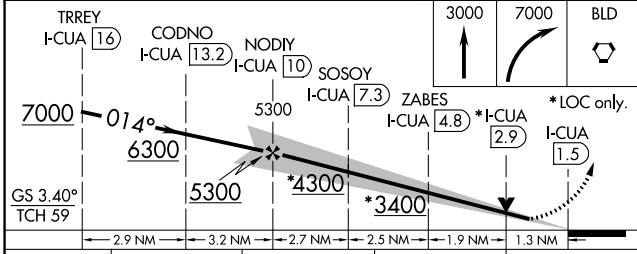
MC CARRAN INTL (LAS)

<p>▼ Rwy 1L helicopter visibility reduction below 3/4 SM NA. DME required. For inop ALS, increase S-ILS 1L all Cats visibility to 7/8 SM.</p>	<p>MALSF</p>	<p>MISSED APPROACH: Climb to 3000 then climbing right turn to 7000 direct BLD VORTAC and hold, continue climb-in-hold to 7000.</p>				
		D-ATIS	LAS VEGAS APP CON	LAS VEGAS TOWER	GND CON	CLNC DEL
132.4	125.025 379.15 (West) 125.6 282.2 (East)	118.75 257.8 (Rwy 1L/19R, 1R/19L) 119.9 257.8 (Rwy 8L/26R, 8R/26L)	121.1 270.8 E of 1R/19L 121.9 254.3 W of 1R/19L	118.0		



DME REQUIRED

ELEV 2181	D	TDZE 2176
-----------	----------	-----------



CATEGORY	A	B	C	D
S-ILS 1L	2460-3/4 284 (300-3/4)			NA
S-LOC 1L	2720-3/4	544 (600-3/4)	2720-1 5/8 544 (600-1 5/8)	NA
C CIRCLING	3020-1 1/4 839 (900-1 1/4)	3040-1 1/4 859 (900-1 1/4)	3100-2 3/4 919 (1000-2 3/4)	NA

REIL Rwys 1R, 8R, 19L and 19R
MIRL Rwy 1R-19L
HIRL Rwys 1L-19R, 8L-26R and 8R-26L

SW-4, 26 MAR 2020 to 23 APR 2020

SW-4, 26 MAR 2020 to 23 APR 2020