

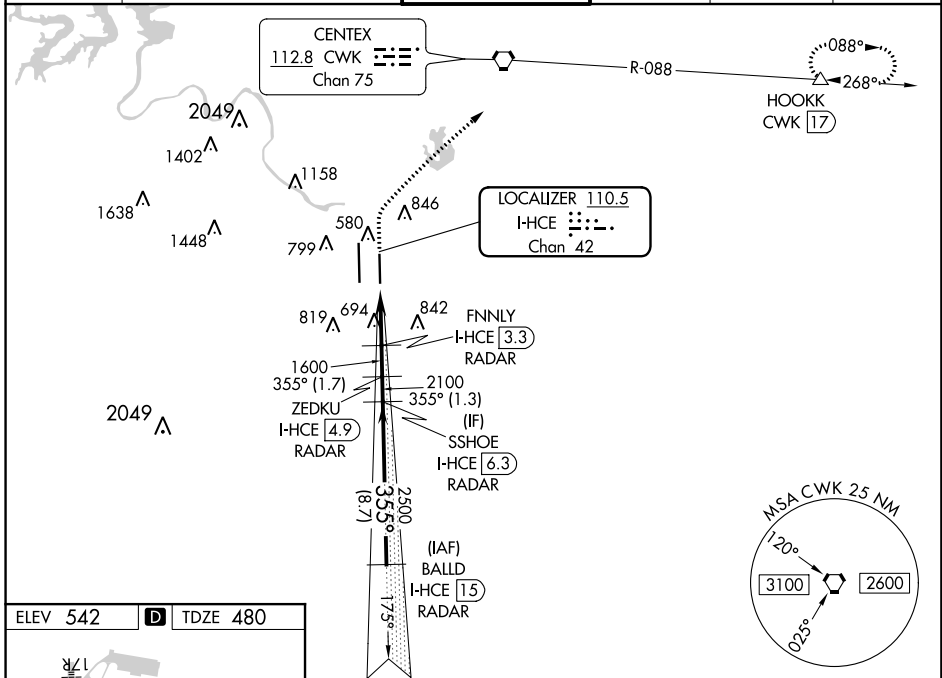
LOC/DME I-HCE <b>110.5</b> Chan <b>42</b>	APP CRS <b>355°</b>	Rwy Idg <b>9000</b> TDZE <b>480</b> Apt Elev <b>542</b>
---	------------------------	---

# ILS or LOC RWY 35R

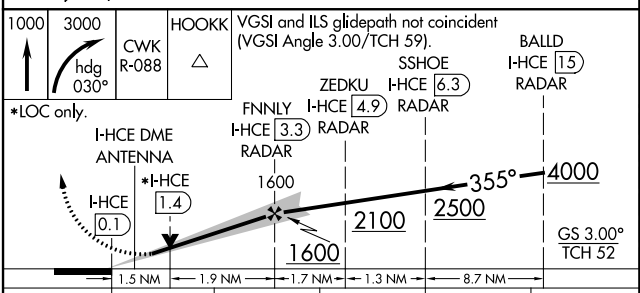
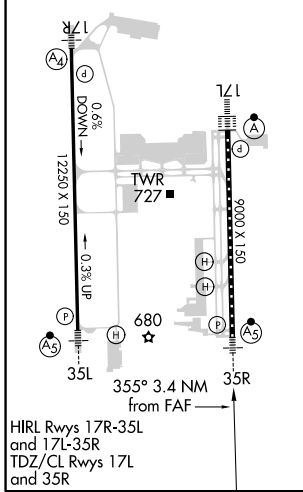
AUSTIN-BERGSTROM INTL (AUS)

DME required. RADAR required for procedure entry.		MALSR 	MISSED APPROACH: Climb to 1000 then climbing right turn to 3000 on heading 030° and CWK VORTAC R-088 to HOOKK/CWK 17 DME and hold.		
Simultaneous approach authorized. For inop ALS, increase S-ILS 35R Cat E visibility to RVR 4000, S-LOC 35R Cats C/D/E visibility to 1/2 SM.					

D-ATIS <b>124.4</b>	AUSTIN APP CON <b>127.225 317.65 (EAST)</b> <b>120.875 270.25 (SOUTH)</b> <b>119.0 370.85 (WEST)</b>	AUSTIN TOWER <b>121.0 281.5</b>	GND CON <b>121.9 348.6</b>	CLNC DEL <b>125.5 263.0</b>	CPDLC
------------------------	---	------------------------------------	-------------------------------	--------------------------------	-------



ELEV <b>542</b>	<b>D</b>	TDZE <b>480</b>
-----------------	----------	-----------------



CATEGORY S-ILS 35R S-LOC 35R CIRCLING	A	B	C	D	E
S-ILS 35R	680/18 200 (200-1/2)				
S-LOC 35R	1000/24	520 (500-1/2)	1000/55	520 (500-1)	
CIRCLING	1040-1 498 (500-1)	1100-1 558 (600-1)	1200-1 3/4 658 (700-1 3/4)	1200-2 658 (700-2)	1520-3 978 (1000-3)

SC-3, 26 MAR 2020 to 23 APR 2020

SC-3, 26 MAR 2020 to 23 APR 2020