

APP CRS <b>100°</b>	Rwy Idg <b>9003</b>
	TDZE <b>421</b>
	Apt Elev <b>421</b>

# RNAV (RNP) Y RWY 10

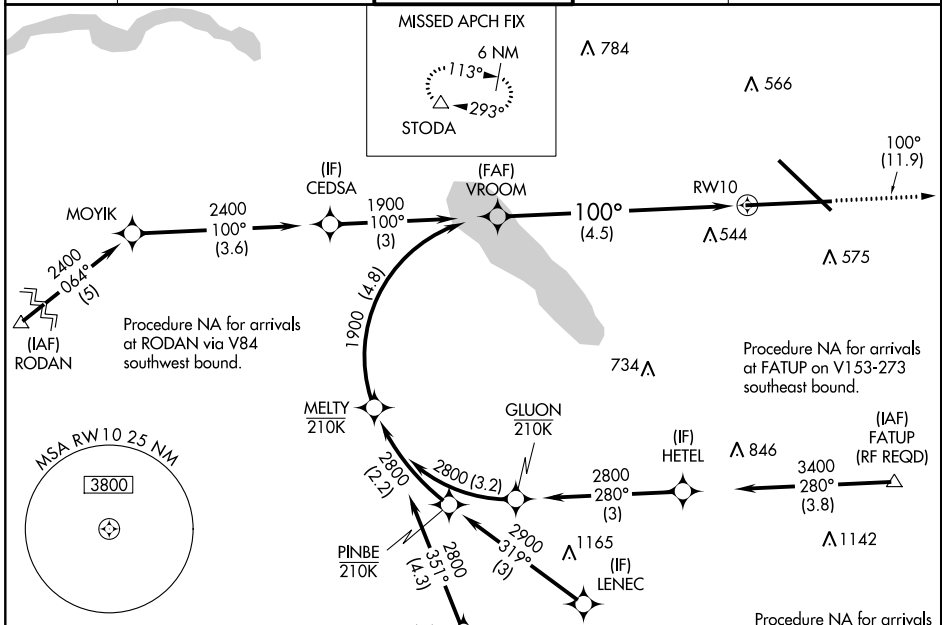
SYRACUSE HANCOCK INTL (SYR)

**▼** For uncompensated Baro-VNAV systems, procedure NA below -18°C (0°F) or above 54°C (130°F). For inoperative MALS, increase RNP 0.15 all Cats visibility to 1 1/4. For inoperative MALS, increase RNP 0.30 all Cats visibility to 1 1/2. GWS required.



**MISSED APPROACH:**  
Climb to 3000 on track 100° to STODA and hold.

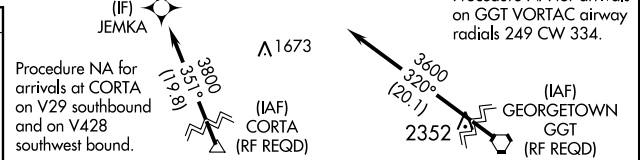
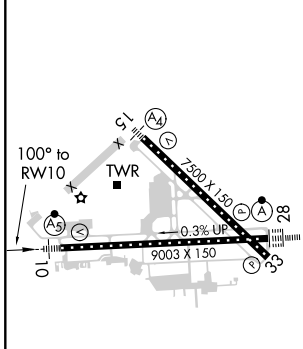
ATIS <b>124.225</b>	SYRACUSE APP CON <b>126.125 269.125</b>	SYRACUSE TOWER <b>120.3 239.0</b>	GND CON <b>121.7 348.6</b>	CLNC DEL <b>125.05 257.775</b>
------------------------	--	--------------------------------------	-------------------------------	-----------------------------------



NE-2: 26 MAR 2020 to 23 APR 2020

NE-2: 26 MAR 2020 to 23 APR 2020

ELEV 421	<b>D</b>	TDZE 421
----------	----------	----------



GP 3.00°	See planview for multiple IF locations.			
TCH 55	4.5 NM			
CATEGORY	A	B	C	D
RNP 0.15 DA		816/45	395 (400-7%)	
RNP 0.30 DA		881/55	460 (500-1)	

TDZ/CL Rwy 28  
HIRL Rwy 10-28 and 15-33

**AUTHORIZATION REQUIRED**