

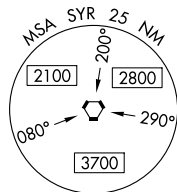
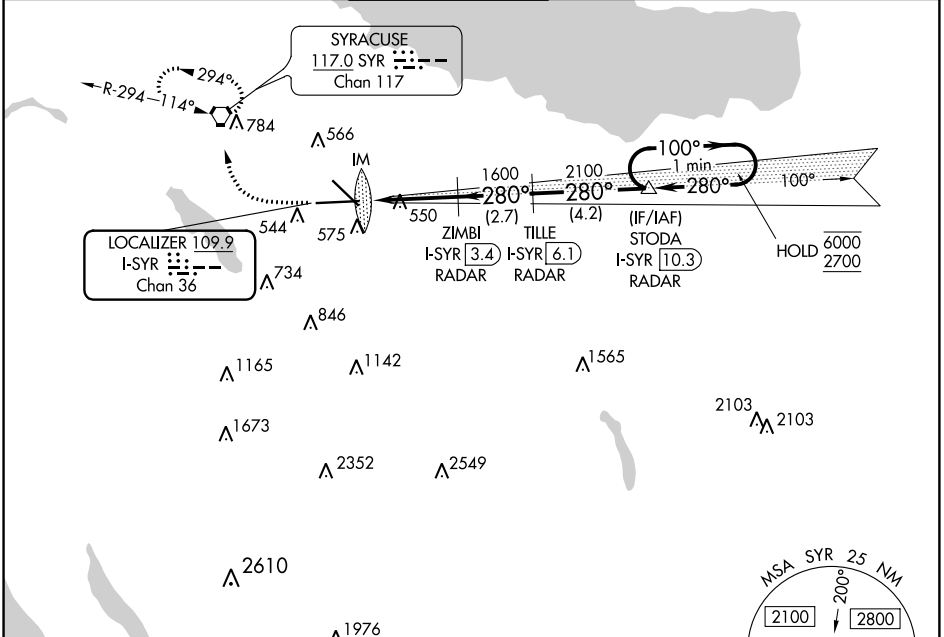
LOC/DME I-SYR 109.9 Chan 36	APP CRS 280°	Rwy Idg 9003 TDZE 413 Apt Elev 421
---	------------------------	---

ILS or LOC RWY 28

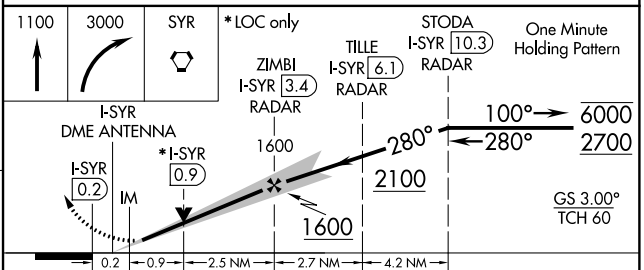
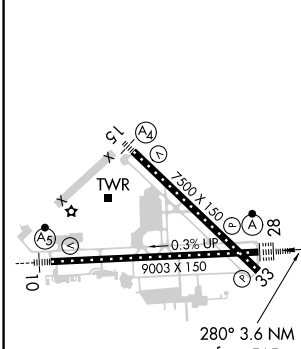
SYRACUSE HANCOCK INTL (SYR)

DME or RADAR required.		ALSF-2	MISSED APPROACH: Climb to 1100 then climbing right turn to 3000 direct SYR VORTAC and hold, continue climb-in-hold to 3000.
------------------------	--	--------	---

ATIS 124.225	SYRACUSE APP CON 126.125 269.125	SYRACUSE TOWER 120.3 239.0	GND CON 121.7 348.6	CLNC DEL 125.05 257.775
------------------------	--	--------------------------------------	-------------------------------	-----------------------------------



ELEV 421	D	TDZE 413
----------	----------	----------



CATEGORY	A	B	C	D
S-ILS 28	613/18 200 (200-½)			
S-LOC 28	800/24	387 (400-½)	800/35	387 (400-¾)
C CIRCLING	900-1 479 (500-1)	920-1 499 (500-1)	1020-1½ 599 (600-1½)	1180-2½ 759 (800-2½)

NE-2: 26 MAR 2020 to 23 APR 2020

NE-2: 26 MAR 2020 to 23 APR 2020