

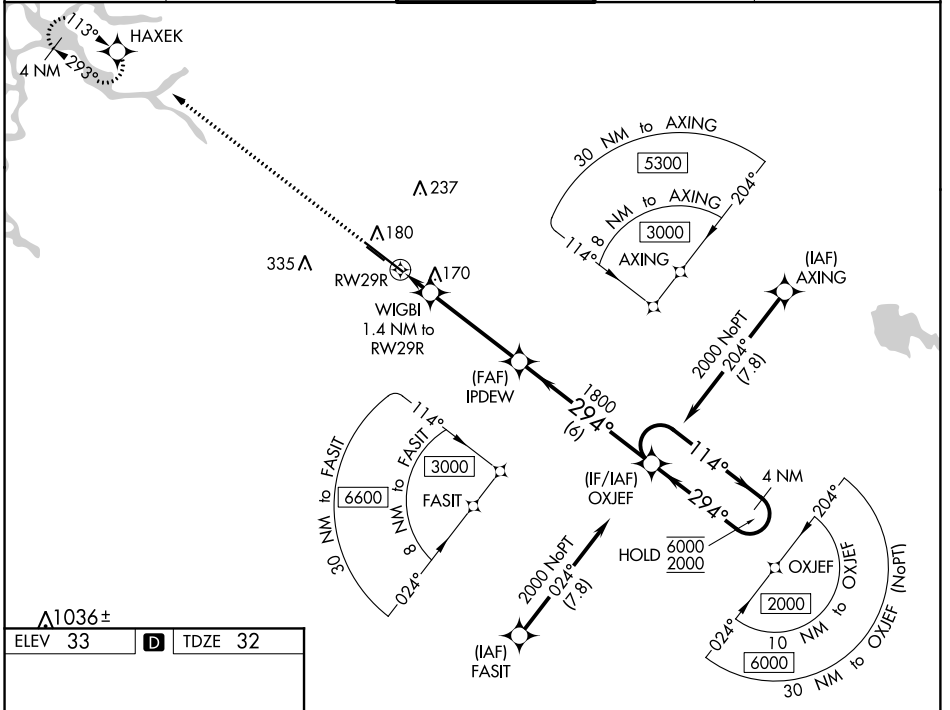
WAAS CH <b>87010</b> <b>W29A</b>	APP CRS <b>294°</b>	Rwy Idg <b>8650</b> TDZE <b>32</b> Apt Elev <b>33</b>
--	------------------------	---

# RNAV (GPS) RWY 29R

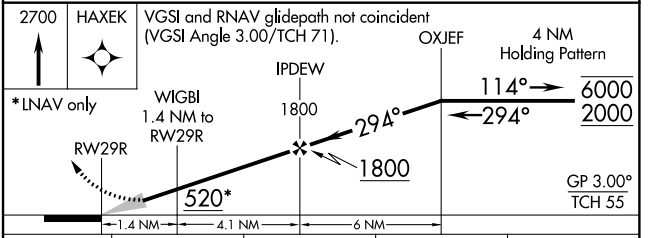
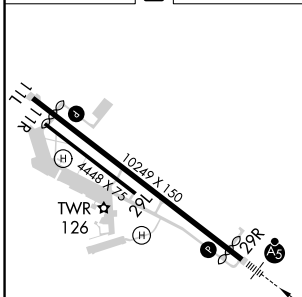
STOCKTON METROPOLITAN (SCK)

RNP APCH.	MALSR 	MISSED APPROACH: Climb to 2700 direct HAXEK and hold.
<p><b>▼</b> For uncompensated Baro-VNAV systems, LNAV/VNAV NA below -3°C or above 54°C. For inop ALS, increase LNAV/VNAV visibility all Cats to RVR 4500. #RVR 1800 authorized with use of FD or AP or HUD to DA.</p>		

ATIS <b>118.25</b>	NORCAL APP CON (SE-NW) <b>123.85 278.3</b> (N-SE) <b>125.1 363.2</b>	STOCKTON TOWER * <b>120.3</b> (CTAF) <b>0 239.0</b>	GND CON <b>121.9</b>	UNICOM <b>122.95</b>
-----------------------	--	--	-------------------------	-------------------------



<b>△1036±</b>	ELEV <b>33</b>	<b>D</b>	TDZE <b>32</b>
---------------	----------------	----------	----------------



CATEGORY	A	B	C	D
LPV DA#		232/24	200 (200-½)	
LNAV/VNAV DA		320/24	288 (300-½)	
LNAV MDA	420/24	388 (400-½)	420/35	388 (400-⅝)
<b>C</b> CIRCLING	500-1 467 (500-1)	540-1 507 (600-1)	640-1¾ 607 (700-1¾)	640-2 607 (700-2)

SW-2, 26 MAR 2020 to 23 APR 2020

SW-2, 26 MAR 2020 to 23 APR 2020