

WAAS CH 93915 W34A	APP CRS 340°	Rwy Idg TDZE 1600 Apt Elev 1636
--	------------------------	---

RNAV (GPS) RWY 34

GREATER BINGHAMTON/EDWIN A LINK FIELD (BGM)

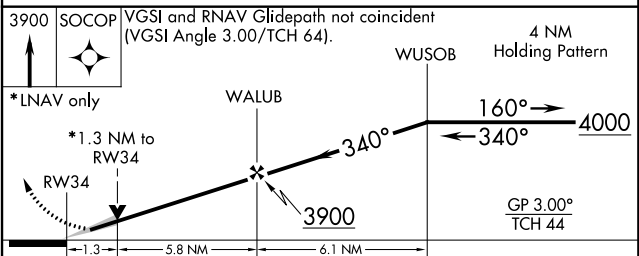
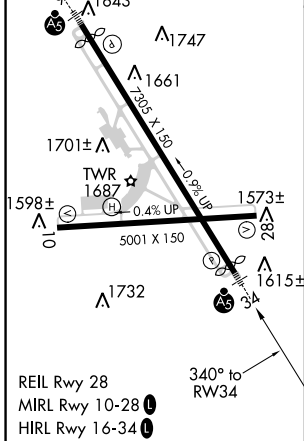
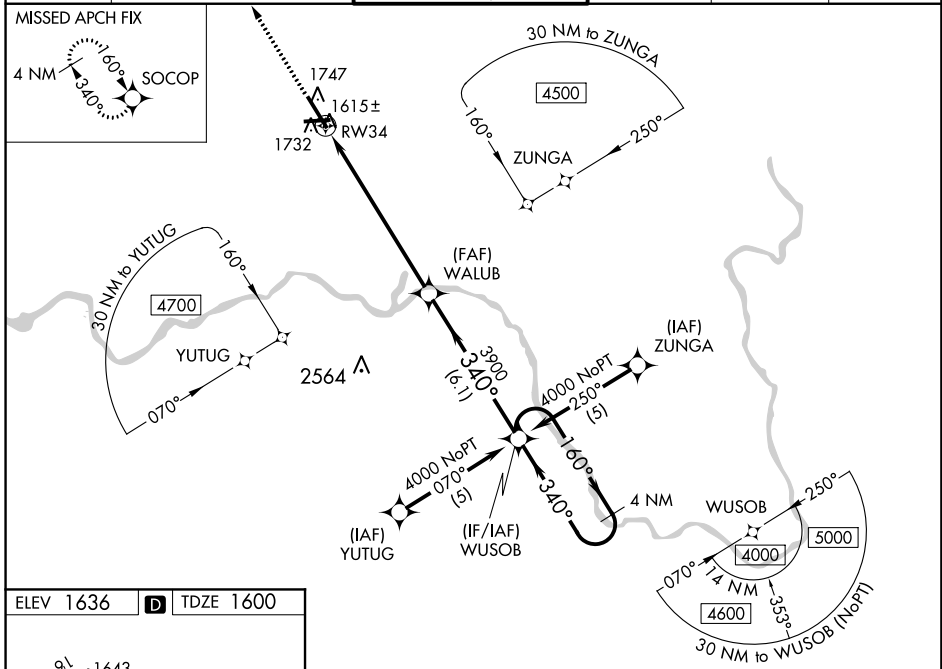
⚠ For uncompensated Baro-VNAV systems, LNAV/VNAV NA below -18°C (0°F) or above 46°C (114°F). DME/DME RNP-0.3 NA. When local altimeter setting not received, use Ithaca altimeter setting and increase all DA 138 feet and all MDA 140 feet, increase LPV all Cats, LNAV Cats C and D and Circling Cat C and D visibility ¼ mile, and LNAV/VNAV all Cats visibility ½ mile. For inoperative MALSR when using Ithaca altimeter setting increase LPV all Cats visibility to RVR 6000. Baro-VNAV and VDP NA when using Ithaca altimeter setting.

MALSR



MISSED APPROACH:
Climb to 3900 direct
SOCOP and hold.

ATIS 128.15	BINGHAMTON APP CON * 118.6 257.625	BINGHAMTON TOWER * 119.3 (CTAF) 239.25	GND CON 121.9	CLNC DEL 125.05	UNICOM 122.95
-----------------------	--	--	-------------------------	---------------------------	-------------------------



CATEGORY	A	B	C	D
LPV DA	1800/24		200 (200-½)	
LNAV/VNAV DA	2082/60		482 (500-1¼)	
LNAV MDA	2040/24	440 (500-½)	2040/40 440 (500-¾)	2040/50 440 (500-1)
CIRCLING	2120-1	484 (500-1)	2120-1½ 484 (500-1½)	2200-2 564 (600-2)

NE-2, 26 MAR 2020 to 23 APR 2020

NE-2, 26 MAR 2020 to 23 APR 2020