

WAAS CH <b>93820</b> <b>W10A</b>	APP CRS <b>098°</b>	Rwy Idg TDZE Apt Elev	<b>5001</b> <b>1591</b> <b>1636</b>
--	------------------------	-----------------------------	---

# RNAV (GPS) RWY 10

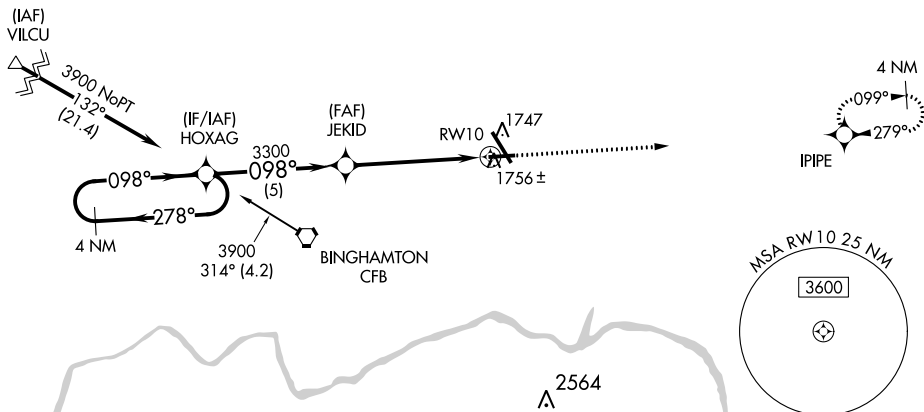
GREATER BINGHAMTON/EDWIN A. LINK FIELD (BGM)

**⚠** Baro-VNAV NA when using Ithaca altimeter setting. For uncompensated Baro-VNAV systems, LNAV/VNAV NA below -18°C (0°F) or above 33°C (91°F). DME/DME RNP-0.3 NA. When local altimeter setting not received, use Ithaca altimeter setting and increase all DA 138 feet and all MDA 140 feet; increase LPV all Cats and LNAV Cats C/D visibility  $\frac{3}{8}$  mile, LNAV/VNAV all Cats visibility  $\frac{1}{2}$  mile and Circling Cats C/D visibility  $\frac{1}{4}$  mile. VDP NA with Ithaca altimeter setting.

**MISSED APPROACH:**  
Climb to 4200 direct  
IPIPE and hold.

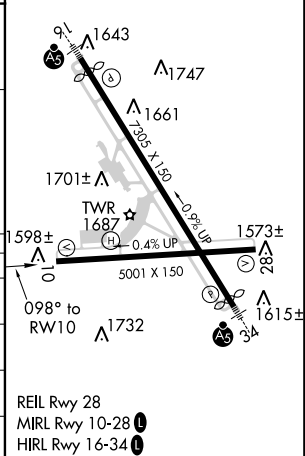
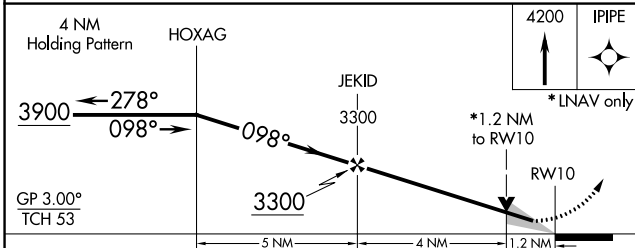
ATIS <b>128.15</b>	BINGHAMTON APP CON * <b>118.6 257.625</b>	BINGHAMTON TOWER * <b>119.3 (CTAF) 0 239.25</b>	GND CON <b>121.9</b>	CLNC DEL <b>125.05</b>	UNICOM <b>122.95</b>
-----------------------	--	--	-------------------------	---------------------------	-------------------------

Procedure NA for arrivals at VILCU on V428 southwest bound.



Procedure NA for arrivals at CFB VORTAC on airway radials 275 CW 015.

ELEV 1636	D	TDZE 1591
-----------	---	-----------



CATEGORY	A	B	C	D
LPV DA		1791- $\frac{3}{4}$	200 (200- $\frac{3}{4}$ )	
LNAV/VNAV DA		1917-1	326 (300-1)	
LNAV MDA	2020-1	429 (400-1)	2020-1 $\frac{1}{4}$	429 (400-1 $\frac{1}{4}$ )
<b>C</b> CIRCLING	2120-1	484 (500-1)	2120-1 $\frac{1}{2}$	2200-2
			484 (500-1 $\frac{1}{2}$ )	564 (600-2)

REIL Rwy 28  
MIRL Rwy 10-28 **Ⓛ**  
HIRL Rwy 16-34 **Ⓛ**