

LOC/DME I-JWN 110.3 Chan 40	APP CRS 198°	Rwy Idg 6001 TDZE 501 Apt Elev 501
--	------------------------	--

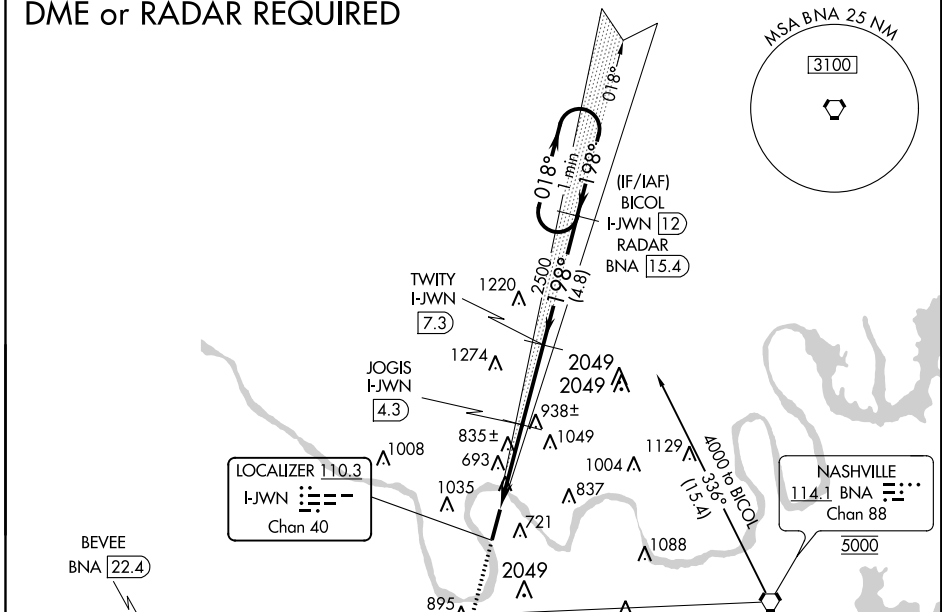
ILS or LOC/DME RWY 20

JOHN C TUNE (JWN)

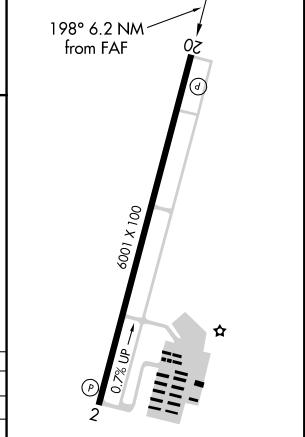
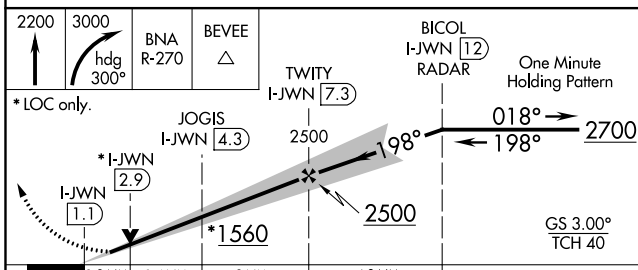
<p>⚠ NA</p> <p>When local altimeter setting not received, use Nashville Intl altimeter setting and increase all DA/MDA 40 feet; increase Circling Cat C visibility to 2 3/4 miles and Cat D visibility to 3 miles. Circling NA east of Rwy 2-20. VDP NA when using Nashville Intl altimeter setting. Helicopter visibility reduction below 3/4 SM NA. DME required.</p>	<p>MISSED APPROACH: Climb to 2200 then climbing right turn to 3000 on heading 300° and BNA VORTAC R-270 to BEVEE/BNA 22.4 DME and hold.</p>
--	---

AWOS-3 127.075	NASHVILLE APP CON 119.35 372.0	CLNC DEL 124.55	UNICOM 122.7 (CTAF)
--------------------------	--	---------------------------	-------------------------------

DME or RADAR REQUIRED



ELEV 501	D	TDZE 501
----------	----------	----------



CATEGORY	A	B	C	D
S-ILS 20	701-3/4 200 (200-3/4)			
S-LOC 20	1100-1	599 (600-1)	1100-1 3/4	599 (600-1 3/4)
C CIRCLING	1200-1	699 (700-1)	1340-2 1/2 839 (900-2 1/2)	1340-2 3/4 839 (900-2 3/4)

MIRL Rwy 2-20
REIL Rwy 2 and 20

SE-1, 27 FEB 2020 to 26 MAR 2020

SE-1, 27 FEB 2020 to 26 MAR 2020