

OCEANSIDE, CALIFORNIA

VOR/DME or TACAN Y RWY 21

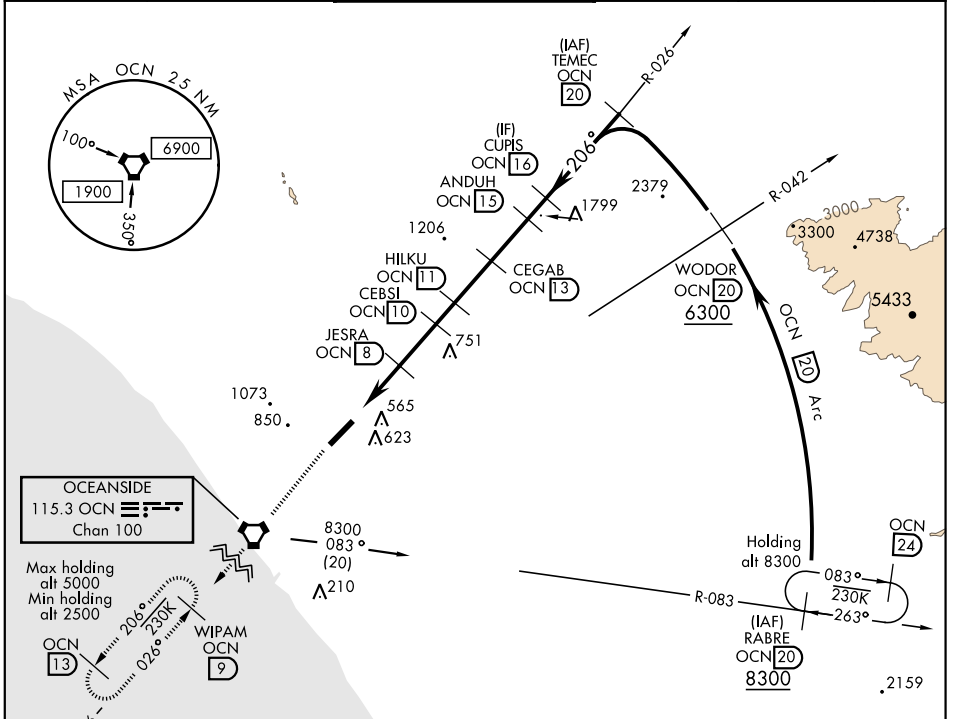
VORTAC OCN 115.3 Chan 100	APCH CRS 206°	Rwy ldg TDZE 78 Arprt Elev 78	6006
---	-------------------------	---	-------------

AL-5985 [USN] CAMP PENDLETON MCAS (MUNN FIELD) (KNFG)

▼ * When ALS inop, increase CAT A vis to 1 mile, CAT B vis to 1/4 mile.
** Circling Rwy 3 not authorized at night when VGSI inop.

SALSF  MISSED APPROACH: Climb to 2500 direct OCN VORTAC then direct WIPAM and hold.

ATIS ★ 285.45	SOCAL APP CON 127.3 323.0	CAMP PENDLETON TOWER ★ 128.775 0 340.2	GND CON 134.675 360.2	CLNC DEL 134.675 271.6	ASR/PAR
-------------------------	-------------------------------------	--	---------------------------------	----------------------------------	---------



2500 OCN WIPAM OCN 9

VORTAC

CEDEVU 6

JESRA 8

CEBSI 10

HILKU 11

CEGAB 13

ANDUH 15

CUPIS 16

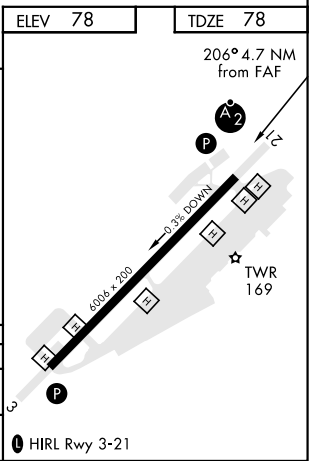
TEMEC 20

1080, 1800, 2100, 2700, 3300, 3600, 5000

† From CEBIS

↑ +3.35° TCH 52

CATEGORY	A	B	C	D
S-21*	940-3/4 862 (900-3/4)	940-1 862 (900-1)	940-2 1/2 862 (900-2 1/2)	
CIRCLING**	1000-1 1/4 922 (1000-1 1/4)	1180-1 1/2 1102 (1200-1 1/2)	1400-3	1322 (1400-3)



OCEANSIDE, CALIFORNIA

33° 18'N-117° 21'W CAMP PENDLETON MCAS (MUNN FIELD) (KNFG)

Amtd 4 03JAN19

VOR/DME or TACAN Y RWY 21

SW-3, 27 FEB 2020 to 26 MAR 2020

SW-3, 27 FEB 2020 to 26 MAR 2020