

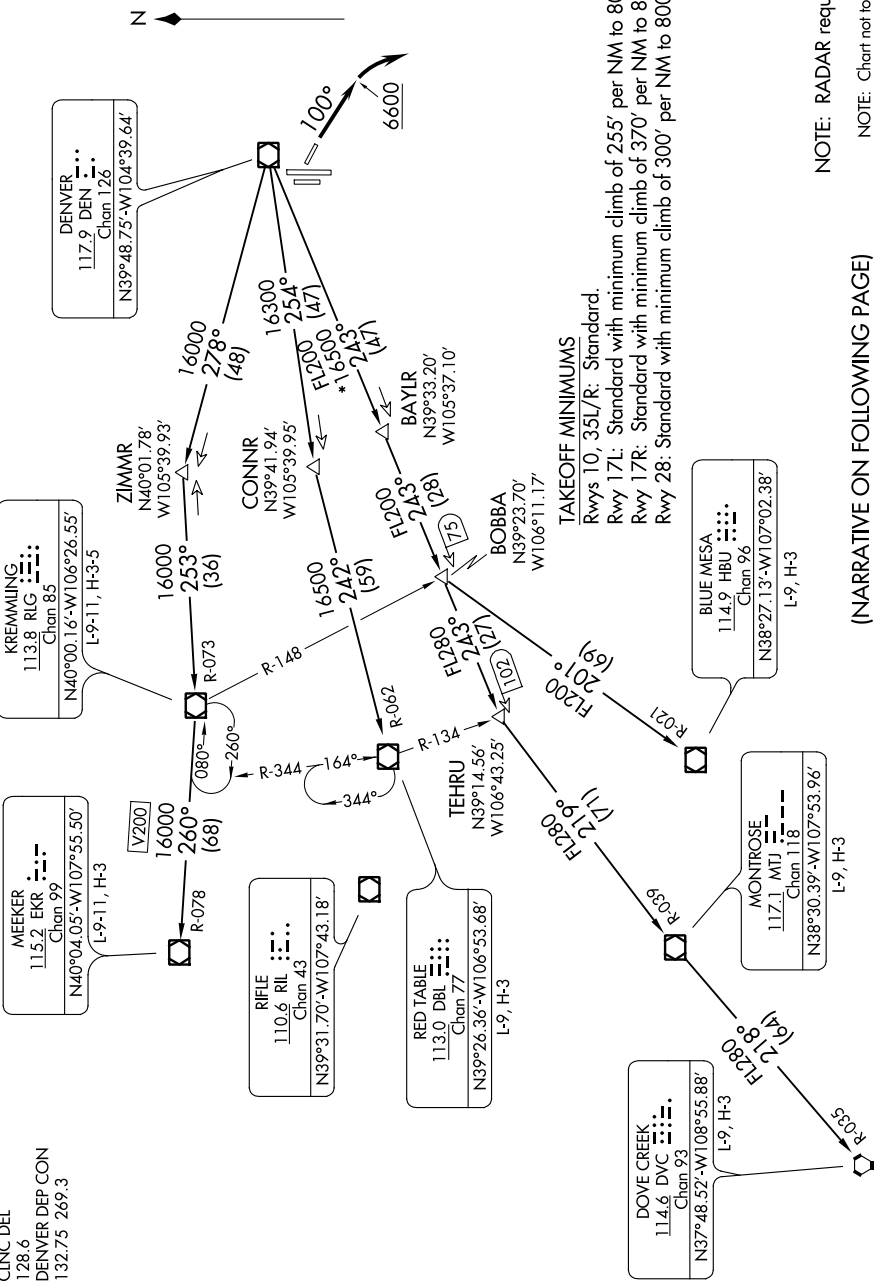
ROCKIES FOUR DEPARTURE

AL-5715 (FAA)

CENTENNIAL (APA)
DENVER, COLORADO

TOP ALTITUDE: ASSIGNED BY ATC

ATIS
120.3
CLNC DEL
128.6
DENVER DEP CON
132.75 269.3



KRENNMING
113.8 EKR
Chan 85
N40°00.16'-W106°26.55'
L-9, H-3

MEEKER
115.2 EKR
Chan 99
N40°04.05'-W107°55.50'
L-9, H-3

DENVER
117.9 DEN
Chan 125
N39°48.75'-W104°39.64'

ZIMMR
N40°01.78'
W105°39.93'

RIFLE
110.6 RIL
Chan 43
N39°31.70'-W107°43.18'

RED TABLE
113.0 DBL
Chan 77
N39°26.36'-W106°53.68'
L-9, H-3

BAYLR
N39°33.20'
W105°37.10'

BOBBA
N39°23.70'
W106°11.17'

BLUE MESA
114.9 HBU
Chan 96
N38°27.13'-W107°02.38'
L-9, H-3

MONTROSE
117.1 MTJ
Chan 118
N38°30.39'-W107°53.96'
L-9, H-3

DOVE CREEK
114.6 DVC
Chan 93
N37°48.52'-W108°55.88'
L-9, H-3

TAKEOFF MINIMUMS
Rwys 10, 35L/R: Standard.
Rwy 17L: Standard with minimum climb of 255' per NM to 8000.
Rwy 17R: Standard with minimum climb of 370' per NM to 8000.
Rwy 28: Standard with minimum climb of 300' per NM to 8000.

NOTE: RADAR required.

NOTE: Chart not to scale.

(NARRATIVE ON FOLLOWING PAGE)

SW-1, 27 FEB 2020 to 26 MAR 2020

SW-1, 27 FEB 2020 to 26 MAR 2020

ROCKIES FOUR DEPARTURE

DENVER, COLORADO
CENTENNIAL (APA)