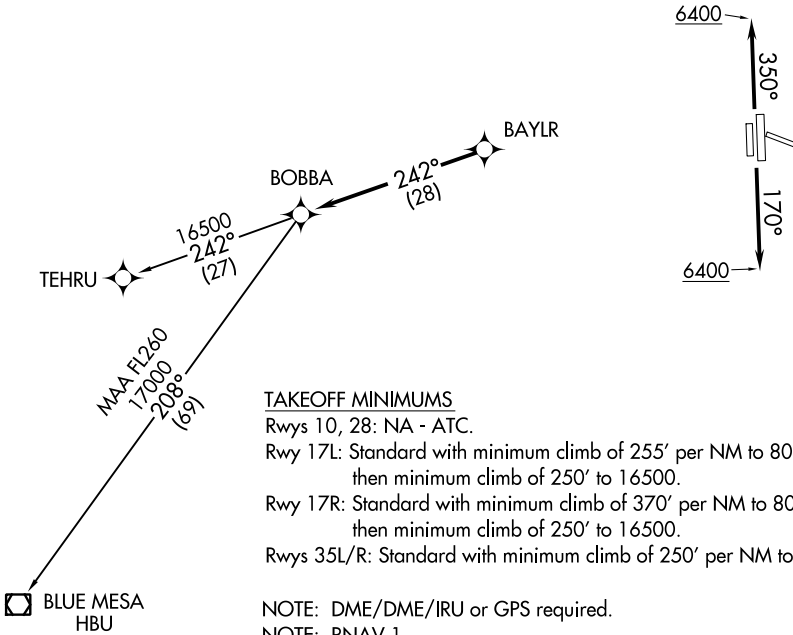


**TOP ALTITUDE:
FL230**

ATIS
120.3
CLNC DEL
128.6
DENVER DEP CON
132.75 269.3



TAKEOFF MINIMUMS

Rwys 10, 28: NA - ATC.

Rwy 17L: Standard with minimum climb of 255' per NM to 8000, then minimum climb of 250' to 16500.

Rwy 17R: Standard with minimum climb of 370' per NM to 8000, then minimum climb of 250' to 16500.

Rwys 35L/R: Standard with minimum climb of 250' per NM to 16500.

NOTE: DME/DME/IRU or GPS required.

NOTE: RNAV 1.

NOTE: Turbojets only.

NOTE: Accelerate to at or above 250K above 10000. If slower speed is required to meet crossing restrictions advise CLNC DEL prior to taxi.

NOTE: RADAR required.

NOTE: For non-GPS equipped aircraft on the Blue Mesa Transition, GLL, DBL, and HBU DMEs must be operational.

NOTE: Chart not to scale.



DEPARTURE ROUTE DESCRIPTION

TAKEOFF RUNWAYS 17L/R: Climb on heading 170° to 6400, then continue climb on heading 170° or as assigned by ATC, thence. . . .

TAKEOFF RUNWAYS 35L/R: Climb on heading 350° to 6400 then continue climb on heading 350° or as assigned by ATC, thence. . . .

. . . .RADAR vectors to BAYLR, then on depicted route to BOBBA, maintain FL230 or filed lower altitude, expect higher filed altitude 10 minutes after departure.

BLUE MESA TRANSITION (BAYLR5.HBU)

TEHRU TRANSITION (BAYLR5.TEHRU)