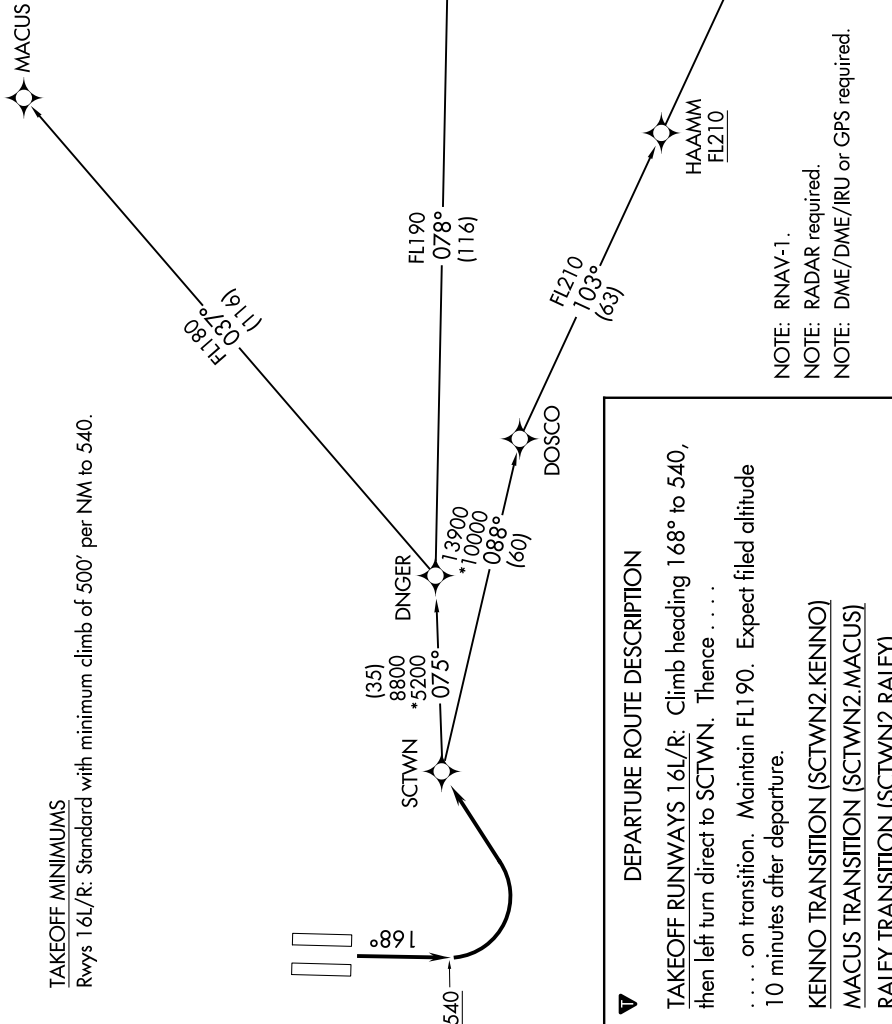


SW-2, 27 FEB 2020 to 26 MAR 2020

**TAKEOFF MINIMUMS**

Rwys 16L/R: Standard with minimum climb of 500' per NM to 540.

- D-ATIS 126.75
- CINC DEL 121.1 256.7
- CPDLC 121.1 256.7
- GND CON 121.7 256.7
- CAPITOL TOWER 125.7 256.7
- NORCAL DEP CON 127.4 317.5



**DEPARTURE ROUTE DESCRIPTION**

- TAKEOFF RUNWAYS 16L/R: Climb heading 168° to 540, then left turn direct to SCTWN. Thence . . . .
- . . . . on transition. Maintain FL190. Expect filed altitude 10 minutes after departure.
- KENNO TRANSITION (SCTWN2.KENNO)
- MACUS TRANSITION (SCTWN2.MACUS)
- RALEY TRANSITION (SCTWN2.RALEY)

- NOTE: RNAV-1.
- NOTE: RADAR required.
- NOTE: DME/DME/IRU or GPS required.
- NOTE: Chart not to scale.

SW-2, 27 FEB 2020 to 26 MAR 2020