

LOC/DME I-MDK 111.75 Chan 54 (Y)	APP CRS 168°	Rwy Idg TDZE Apt Elev	8605 27 27
---	------------------------	-----------------------------	---------------------------------------

ILS or LOC RWY 16L

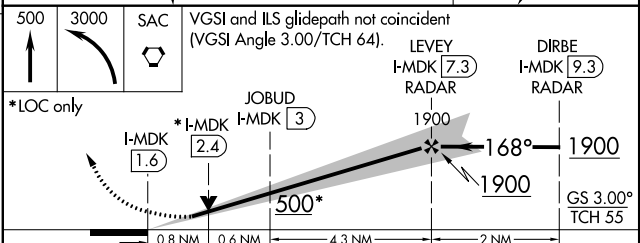
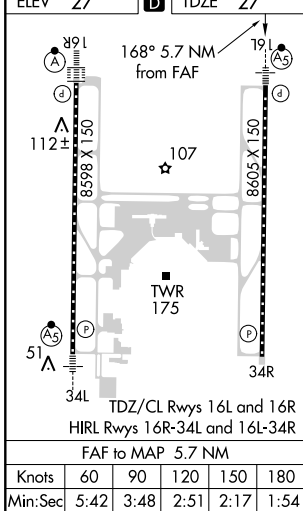
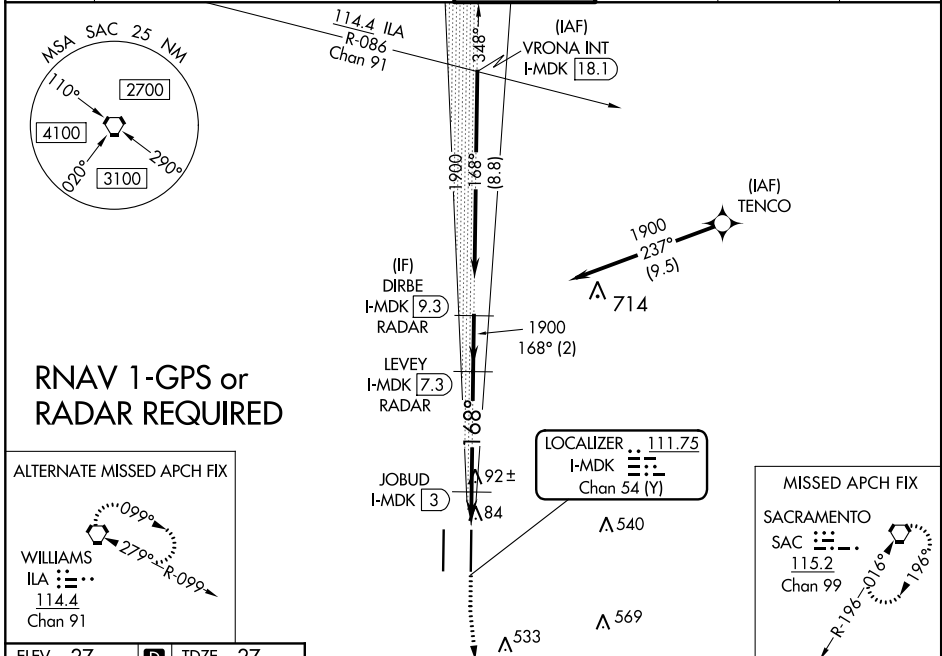
SACRAMENTO INTL (SMF)

⚠ Circling NA west of Rwy 16L-34R. DME or RADAR required. Simultaneous approach authorized. For inop ALS, increase S-LOC 16L Cat C/D visibility to 1 1/2 SM and S-LOC 16L JOBUD fix minimums Cat C/D visibility to RVR 4500.



MISSED APPROACH: Climb to 500 then climbing left turn to 3000 direct SAC VORTAC and hold.

D-ATIS 126.75	NORCAL APP CON 125.4 259.1 (W-NE) 125.25 257.9 (SW) 127.4 317.5 (E-SE)	CAPITOL TOWER 125.7 256.7	GND CON 121.7 256.7	CLNC DEL 121.1 256.7	CPDLC
-------------------------	---	-------------------------------------	-------------------------------	--------------------------------	-------



CATEGORY	A	B	C	D
S-ILS 16L	227/18		200 (200-1/2)	
S-LOC 16L	500/24	473 (500-1/2)	500/50	473 (500-1)
C CIRCLING	500-1	473 (500-1)	500-1 1/2 473 (500-1 1/2)	840-2 3/4 813 (900-2 3/4)
JOBUD FIX MINIMUMS (DME REQUIRED)				
S-LOC 16L	340/24		313 (400-1/2)	
C CIRCLING	400-1 373 (400-1)	480-1 453 (500-1)	480-1 1/2 453 (500-1 1/2)	840-2 3/4 813 (900-2 3/4)

SW-2, 27 FEB 2020 to 26 MAR 2020

SW-2, 27 FEB 2020 to 26 MAR 2020