

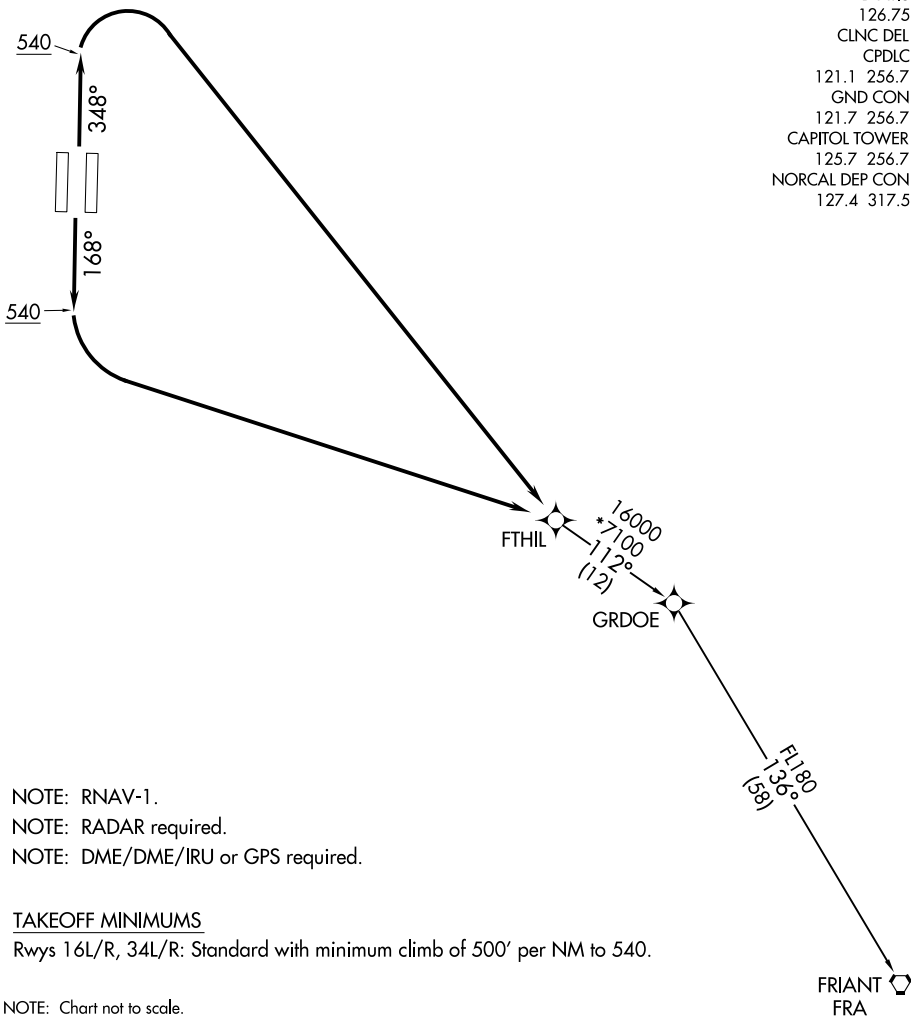
(FTHIL2.FTHIL) 18312

FTHIL TWO DEPARTURE (RNAV)

AL-5490 (FAA)

SACRAMENTO INTL (SMF)
SACRAMENTO, CALIFORNIA

- D-ATIS 126.75
- CLNC DEL CPDLC 121.1 256.7
- GND CON 121.7 256.7
- CAPITOL TOWER 125.7 256.7
- NORCAL DEP CON 127.4 317.5



SW-2, 27 FEB 2020 to 26 MAR 2020

SW-2, 27 FEB 2020 to 26 MAR 2020

- NOTE: RNAV-1.
- NOTE: RADAR required.
- NOTE: DME/DME/IRU or GPS required.

TAKEOFF MINIMUMS

Rwys 16L/R, 34L/R: Standard with minimum climb of 500' per NM to 540.

NOTE: Chart not to scale.

DEPARTURE ROUTE DESCRIPTION

TAKEOFF RUNWAYS 16L/R: Climb heading 168° to 540, then left turn direct to FTHIL. Thence. . .

TAKEOFF RUNWAYS 34L/R: Climb heading 348° to 540, then right turn direct to FTHIL. Thence. . .

. . . on transition. Maintain FL190. Expect filed altitude 10 minutes after departure.

FRIANT TRANSITION (FTHIL2.FRA)

FTHIL TWO DEPARTURE (RNAV)

(FTHIL2.FTHIL) 30APR15

SACRAMENTO, CALIFORNIA
SACRAMENTO INTL (SMF)