

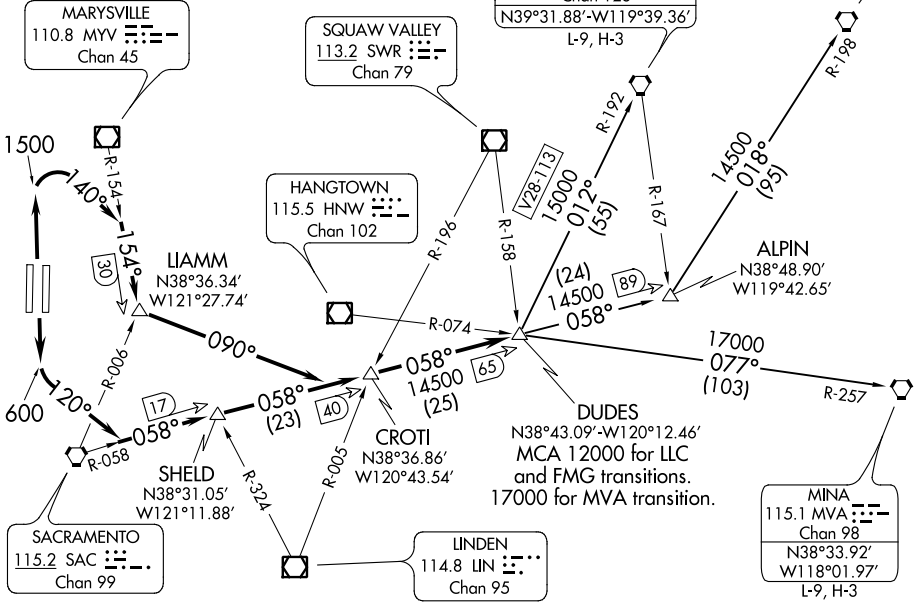
# DUDES NINE DEPARTURE

AL-5490 (FAA)

SACRAMENTO INTL (SMF)  
SACRAMENTO, CALIFORNIA

CLNC DEL  
121.1 256.7  
CPDLC  
NORCAL DEP CON  
125.4 259.1 (W-NE)  
125.25 257.9 (SW)  
127.4 317.5 (E-SE)

NOTE: RADAR required.  
NOTE: DME required.



NOTE: Chart not to scale.

## DEPARTURE ROUTE DESCRIPTION

**TAKEOFF RUNWAYS 16L/R:** Maintain rwy heading until 600', then turn left to a 120° heading to intercept and proceed via the SAC R-058 to DUDES INT, then via (transition) or (assigned route). Expect further clearance to filed altitude after CROTI INT.

**TAKEOFF RUNWAYS 34L/R:** Maintain rwy heading until 1500', then turn right to a 140° heading to intercept and proceed via the MYV R-154 to intercept and proceed via the SAC R-058 to DUDES INT, then via (transition) or (assigned route). Expect further clearance to filed altitude after CROTI INT.

### LOST COMMUNICATIONS:

**TAKEOFF RUNWAYS 34L/R:** Maintain rwy heading until 1500', then turn right heading 140° to intercept and proceed via the MYV R-154 to intercept and proceed via the SAC R-058 to DUDES INT. Then resume own navigation.

**LOVELOCK TRANSITION (DUDES9.LLC):** From over DUDES INT via the SAC R-058 and the LLC R-198 to LLC VORTAC.

**MINA TRANSITION (DUDES9.MVA):** From over DUDES INT via the MVA R-257 to MVA VORTAC.

**MUSTANG TRANSITION (DUDES9.FMG):** From over DUDES INT via the FMG R-192 to FMG VORTAC.

# DUDES NINE DEPARTURE

(DUDES9.DUDES) 100CT96

SACRAMENTO, CALIFORNIA  
SACRAMENTO INTL (SMF)

SW-2, 27 FEB 2020 to 26 MAR 2020

SW-2, 27 FEB 2020 to 26 MAR 2020