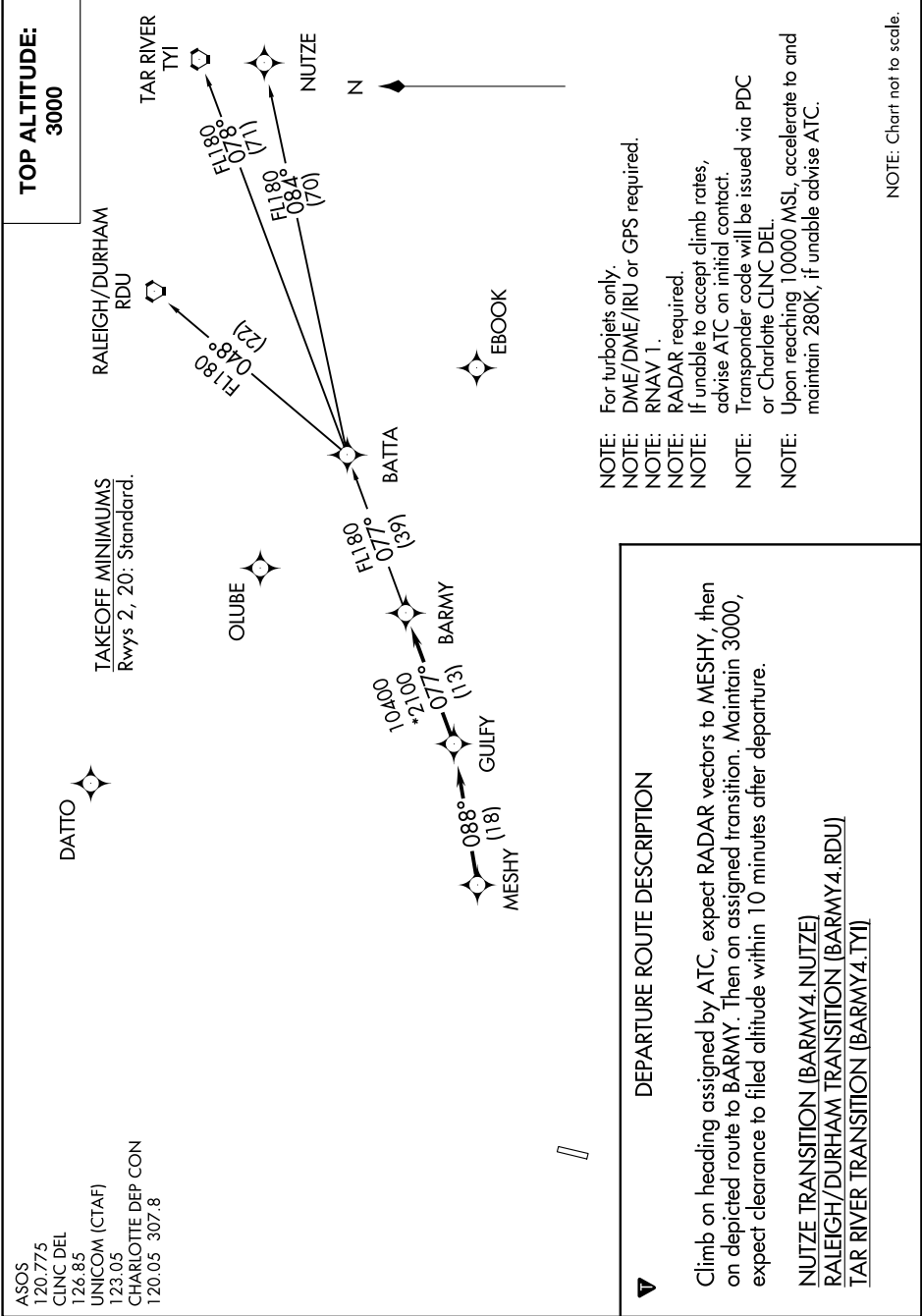


BARMY FOUR DEPARTURE (RNAV)

ROCK HILL/YORK COUNTY/BRYANT FIELD (UZA)
ROCK HILL, SOUTH CAROLINA

SE-2, 27 FEB 2020 to 26 MAR 2020



ASOS 120.775
CLNC DEL 126.85
UNICOM (CTAF) 123.05
CHARLOTTE DEP CON 120.05 307.8

TAKEOFF MINIMUMS
Rwys 2, 20: Standard.

TOP ALTITUDE:
3000

DEPARTURE ROUTE DESCRIPTION

Climb on heading assigned by ATC, expect RADAR vectors to MESHY, then on depicted route to BARMY. Then on assigned transition. Maintain 3000, expect clearance to filed altitude within 10 minutes after departure.

- NUTZE TRANSITION (BARMY4.NUTZE)
- RALEIGH/DURHAM TRANSITION (BARMY4.RDU)
- TAR RIVER TRANSITION (BARMY4.TYI)

- NOTE: For turbojets only.
- NOTE: DME/DME/IRU or GPS required.
- NOTE: RNAV 1.
- NOTE: RADAR required.
- NOTE: If unable to accept climb rates, advise ATC on initial contact.
- NOTE: Transponder code will be issued via PDC or Charlotte CLNC DEL.
- NOTE: Upon reaching 10000 MSL, accelerate to and maintain 280K, if unable advise ATC.

NOTE: Chart not to scale.

SE-2, 27 FEB 2020 to 26 MAR 2020

BARMY FOUR DEPARTURE (RNAV)