

LOC/DME I-ALN <b>108.5</b> Chan <b>22</b>	APP CRS <b>114°</b>	Rwy Idg <b>8099</b> TDZE <b>539</b> Apt Elev <b>545</b>
---	------------------------	--

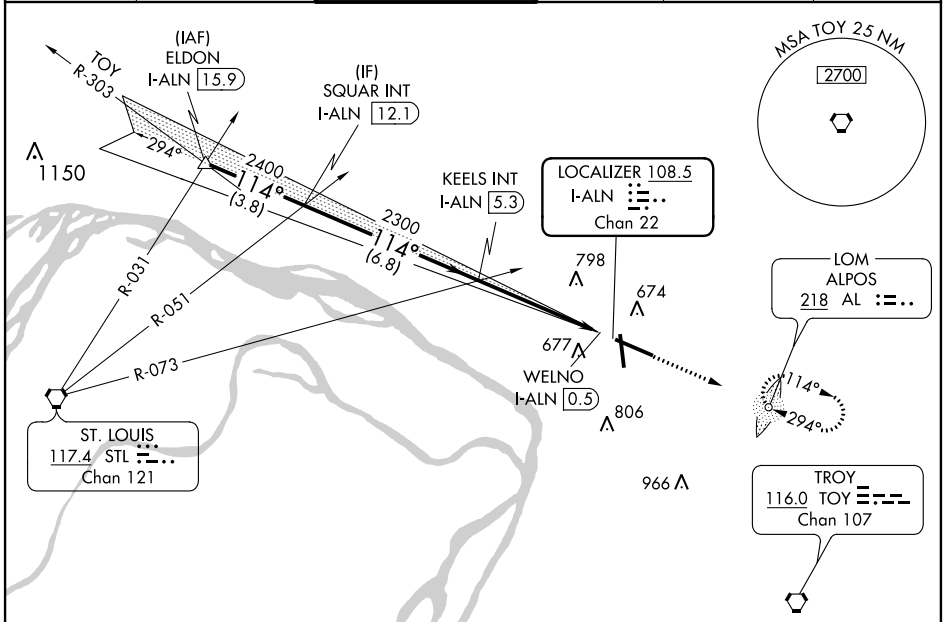
# LOC BC RWY 11

ST LOUIS RGNL (ALN)

**⚠** Visibility reduction by helicopters NA. ADF required. When local altimeter setting not received, use St Louis Lambert Intl altimeter setting, and increase all MDA 60 feet, and increase LNAV Cat C and D and Circling Cat C visibility ¼ mile. VDP NA with St Louis Lambert Intl altimeter setting. When VGSi inoperative, Circling Rwy 17/35 NA at night.

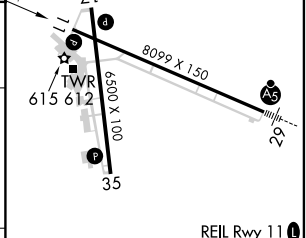
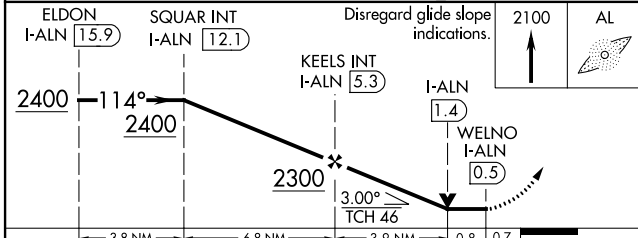
MISSED APPROACH: Climb to 2100 direct AL LOM and hold.

ATIS <b>128.0</b>	ST LOUIS APP CON <b>124.2 353.9</b>	REGIONAL TOWER* <b>126.0(CTAF) 0 239.0</b>	GND CON <b>120.2</b>	CLNC DEL <b>120.2</b> (when tower closed)	UNICOM <b>122.95</b>
----------------------	--	---	-------------------------	---	-------------------------



ELEV 545	TDZE 539
----------	----------

## BACK COURSE



CATEGORY	A	B	C	D
S-11	1060-1 521 (600-1)		1060-1½ 521 (600-1½)	
CIRCLING	1060-1 515 (600-1)		1060-1½ 515 (600-1½)	1100-2 555 (600-2)

FAF to MAP 4.7 NM					
Knots	60	90	120	150	180
Min:Sec	4:42	3:08	2:21	1:53	1:34

EC-3, 27 FEB 2020 to 26 MAR 2020

EC-3, 27 FEB 2020 to 26 MAR 2020