

WAAS CH <b>90218</b> <b>W28B</b>	APP CRS <b>278°</b>	Rwy Idg TDZE Apt Elev	<b>5000</b> <b>906</b> <b>906</b>
--	------------------------	-----------------------------	---

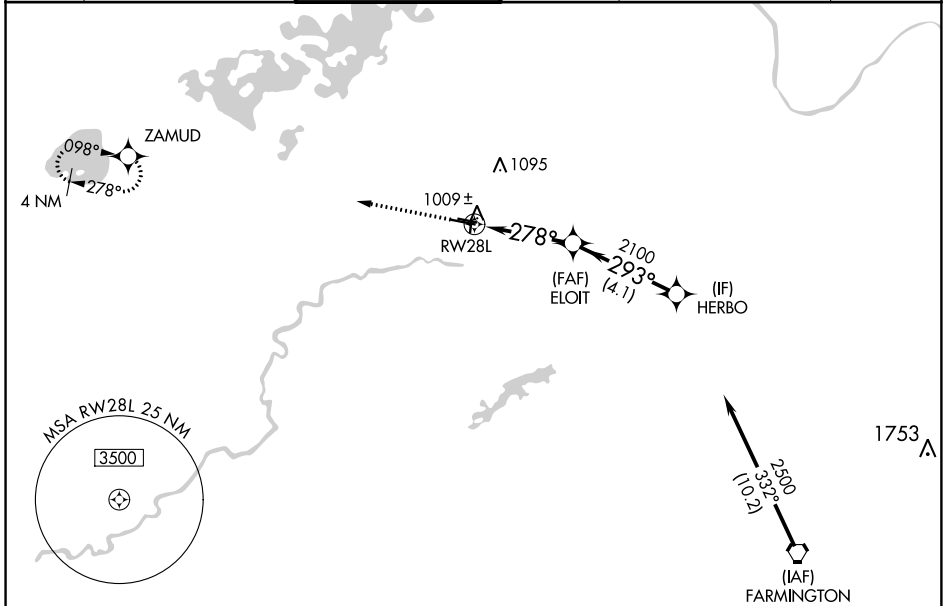
# RNAV (GPS) RWY 28L

FLYING CLOUD (FCM)

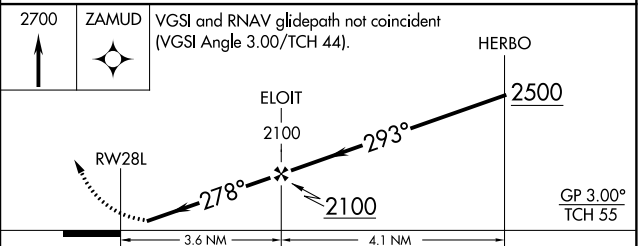
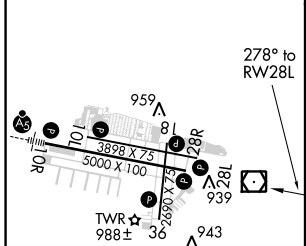
**⚠** For uncompensated Baro-VNAV systems, LNAV/VNAV NA below -16°C (2°F) or above 54°C (130°F). When local altimeter setting not received, use Minneapolis-St Paul Intl/Wold-Chamberlain altimeter setting and increase all DA 34 feet and all MDA 40 feet, increase LNAV Cats C and D visibility 1/8 mile. DME/DME RNP-0.3 NA. Night Landing: Rwy 18/36 NA. Helicopters visibility reduction below 3/4 SM NA.

MISSED APPROACH: Climb to 2700 direct ZAMUD and hold.

ATIS <b>124.9</b>	MINNEAPOLIS APP CON <b>134.7 284.7</b>	FLYING CLOUD TOWER ★ <b>119.15 (CTAF)</b>	GND CON <b>121.7</b>	MINNEAPOLIS CLNC DEL <b>121.7</b> (When tower closed)	UNICOM <b>122.95</b>
----------------------	---	--	-------------------------	---	-------------------------



ELEV 906	TDZE 906
----------	----------



CATEGORY	A	B	C	D
LPV DA		1156-1	250 (300-1)	
LNAV/VNAV DA		1198-1	292 (300-1)	
LNAV MDA	1280-1	374 (400-1)	1280-1 3/8	374 (400-1 1/8)
<b>C</b> CIRCLING	1320-1 414 (500-1)	1440-1 534 (600-1)	1440-1 1/2 534 (600-1 1/2)	1540-2 634 (700-2)

HIRL Rwy 10R-28L **Ⓛ**  
 REIL Rwy 10L, 28R  
 REIL Rwy 18, 28L, and 36 **Ⓛ**  
 MIRL Rwy 10L-28R and 18-36 **Ⓛ**

NC-1, 27 FEB 2020 to 26 MAR 2020

NC-1, 27 FEB 2020 to 26 MAR 2020