

WAAS CH <b>58202</b> <b>W26A</b>	APP CRS <b>257°</b>	Rwy Idg TDZE Apt Elev	<b>6013</b> <b>77</b> <b>77</b>
--	------------------------	-----------------------------	---------------------------------------

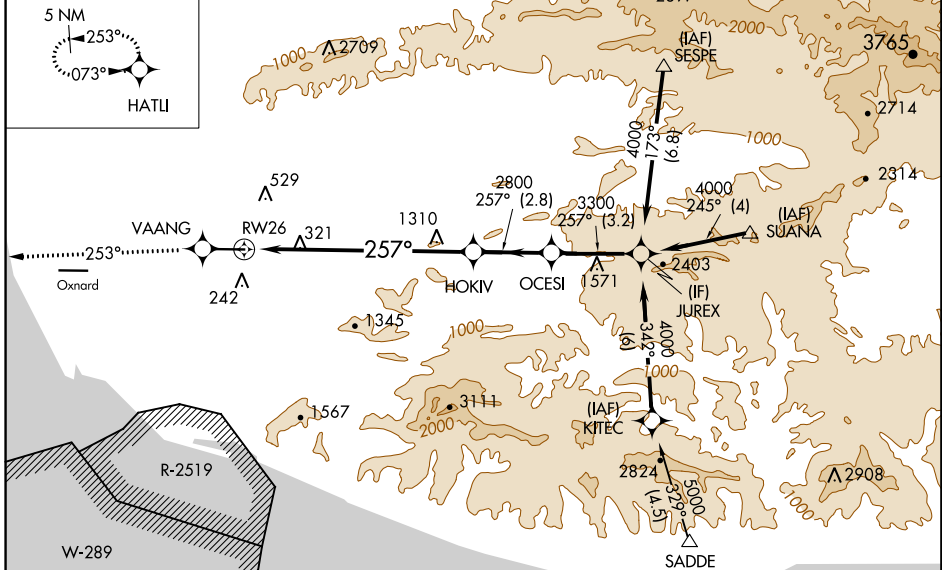
# RNAV (GPS) Z RWY 26

CAMARILLO (CMA)

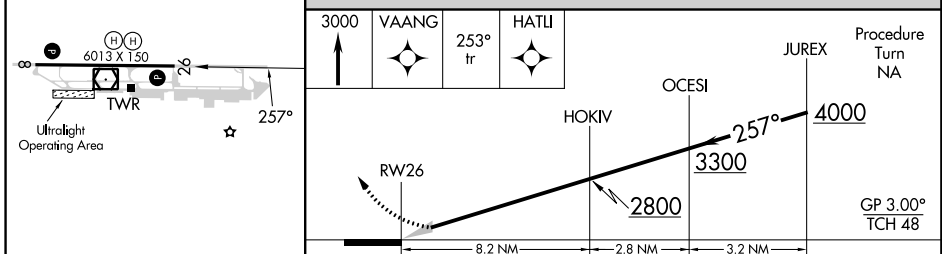
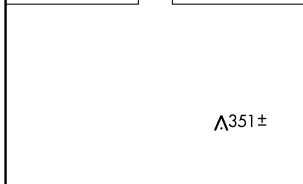
<b>V</b> DME/DME RNP -0.3 NA. <b>NA</b> If local altimeter setting not received, use Oxnard altimeter setting and increase DA 18 feet.	MISSED APPROACH: Climb to 3000 direct VAANG and via 253° track to HATLI and hold.
---	---

ATIS <b>126.025</b>	POINT MUGU APP CON * <b>124.7 335.5</b>	CAMARILLO TOWER * <b>128.2 (CTAF) 0 269.4</b>	GND CON <b>121.8</b>	CLNC DEL <b>121.8</b>	POINT MUGU CLNC DEL <b>120.75 279.55</b>	UNICOM <b>122.95</b>
------------------------	--	--	-------------------------	--------------------------	---	-------------------------

MISSED APCH FIX Procedure NA for arrivals at SUANA via V326 eastbound and arrivals at SESPE via V186-597 westbound.



ELEV 77	TDZE 77
---------	---------



REIL Rwy 8 and 26	MIRL Rwy 8-26			
CATEGORY	A	B	C	D
LPV DA	327-3/4 250 (300-3/4)			

SW-3, 27 FEB 2020 to 26 MAR 2020

SW-3, 27 FEB 2020 to 26 MAR 2020