

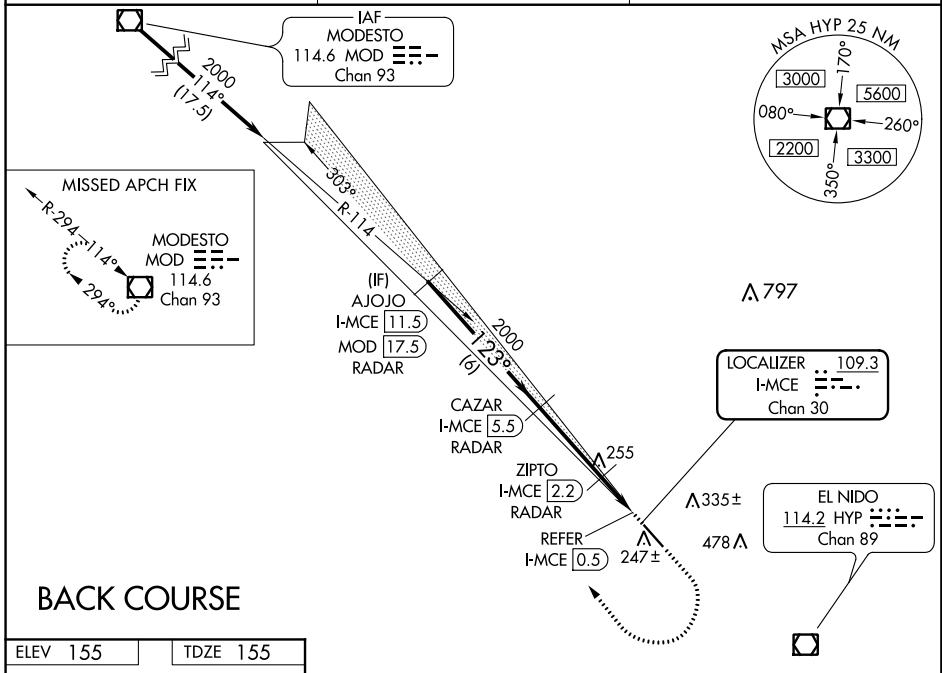
LOC/DME I-MCE 109.3 Chan 30	APP CRS 123°	Rwy Idg TDZE 155 Apt Elev 155	5914
--	------------------------	---	-------------

LOC BC RWY 12

MERCED RGNL/MACREADY FIELD (MCE)

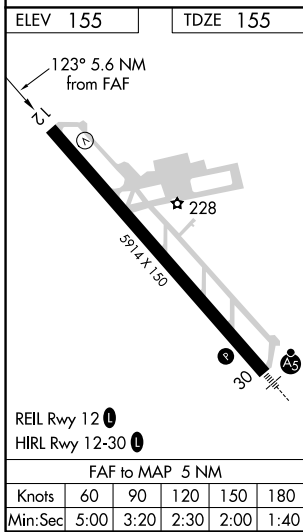
DME or RADAR required.	MISSED APPROACH: Climb to 1000 then climbing right turn to 3000 direct MOD VOR/DME and hold.
<p>▼ Rwy 12 helicopter visibility reduction below 3/4 SM NA.</p> <p>▲ NA Circling NA northeast of Rwy 12-30.</p>	

ASOS 132.175	NORCAL APP CON 120.95 269.45	UNICOM 122.7 (CTAF) 0
------------------------	--	---------------------------------



SW-2, 27 FEB 2020 to 26 MAR 2020

SW-2, 27 FEB 2020 to 26 MAR 2020



	AJOJO I-MCE 11.5 RADAR	CAZAR I-MCE 5.5 RADAR	ZIPTO I-MCE 2.2 RADAR	1000	3000	MOD
	2000	2000	640	I-MCE 0.9	REFER	I-MCE 0.5
Disregard glide slope indications.						
	6 NM	3.3 NM	1.3 NM	0.4 NM	0.6 NM	
CATEGORY	A		B		C	
S-12	640-1 485 (500-1)		640-1 3/8 485 (500-1 3/8)		720-2 565 (600-2)	
CIRCLING	640-1 485 (500-1)		640-1 1/2 485 (500-1 1/2)		720-2 565 (600-2)	
ZIPTO FIX MINIMUMS						
S-12	520-1 365 (400-1)		NA			
CIRCLING	560-1 405 (500-1)		620-1 465 (500-1)		720-2 565 (600-2)	