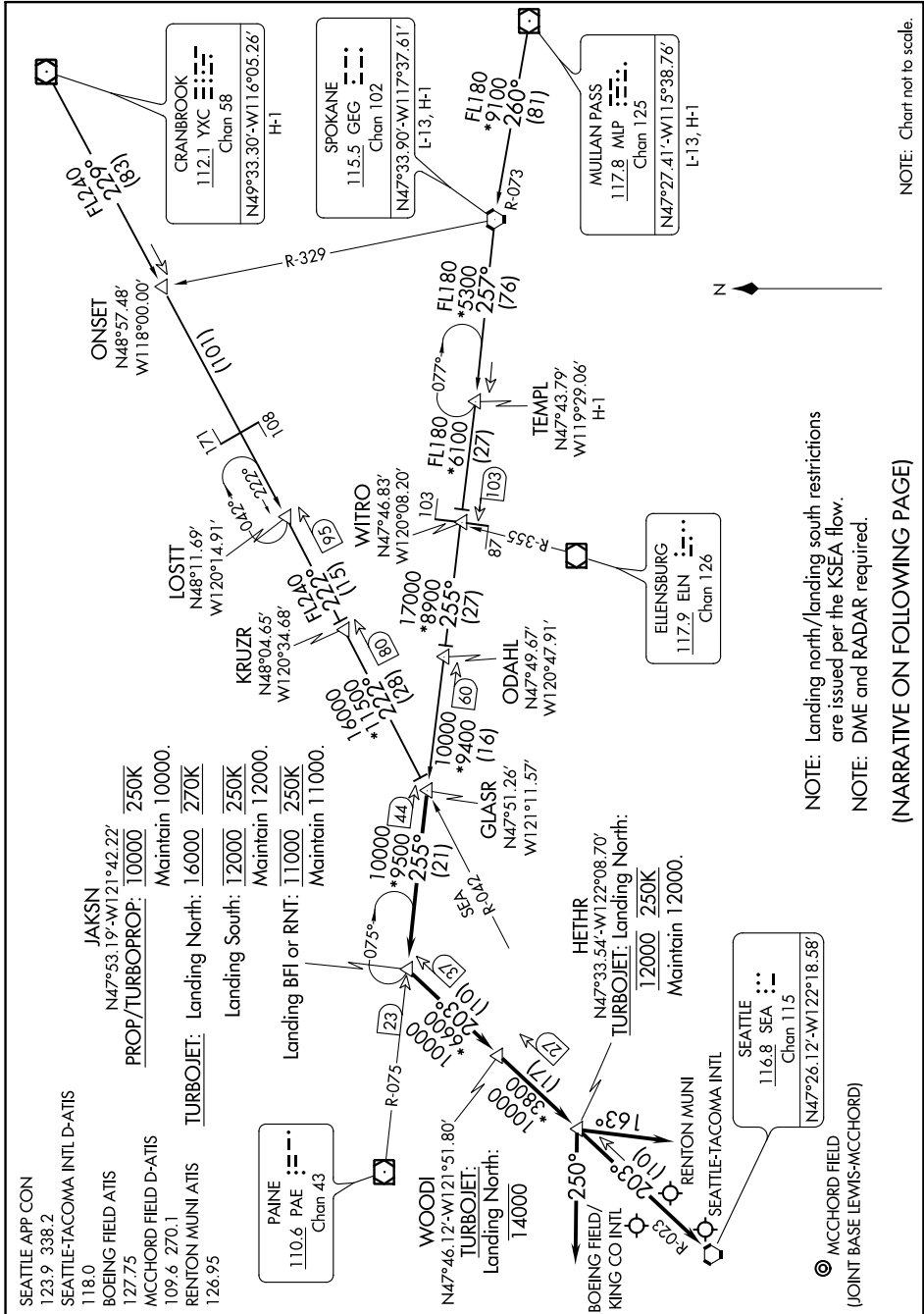


# GLASR ONE ARRIVAL

NW-1, '1- '27 FEB 2020 to 26 MAR 2020



NOTE: Chart not to scale.

NOTE: Landing north/landing south restrictions are issued per the KSEA flow.

NOTE: DME and RADAR required.

(NARRATIVE ON FOLLOWING PAGE)

NW-1, '27 FEB 2020 to 26 MAR 2020

# GLASR ONE ARRIVAL