

WAAS CH 66017 W30A	APP CRS 298°	Rwy Idg TDZE Apt Elev	6516 828 828
--	------------------------	-----------------------------	---

RNAV (GPS) RWY 30

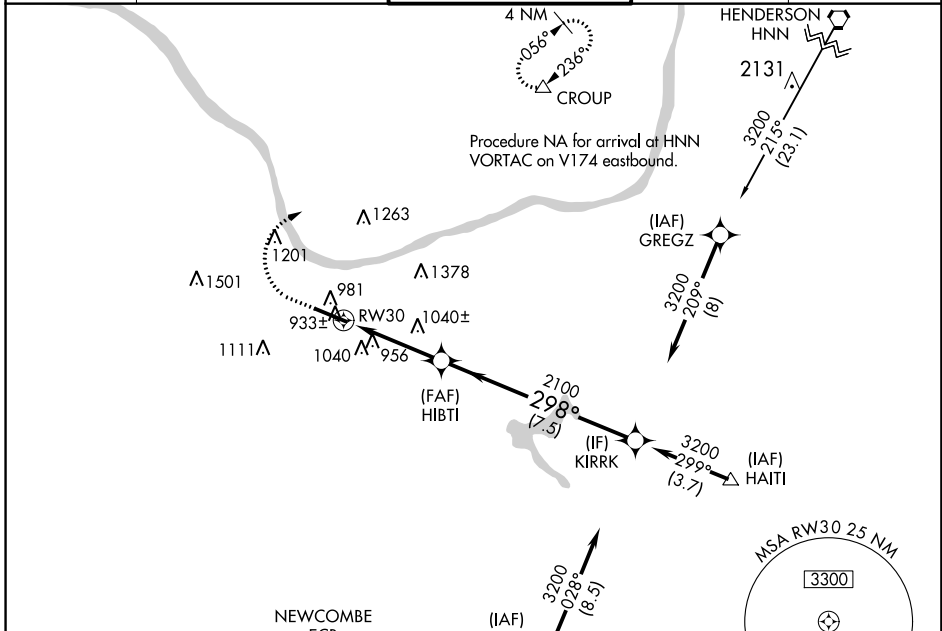
TRI-STATE/MILTON J FERGUSON FIELD (HTS)

RNP APCH.

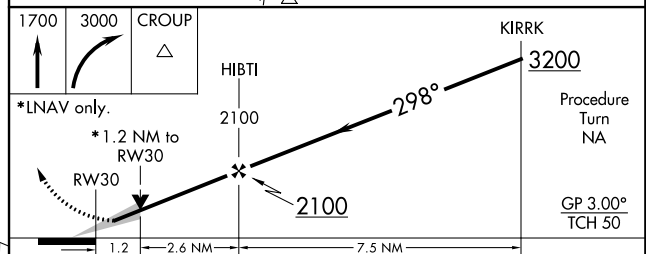
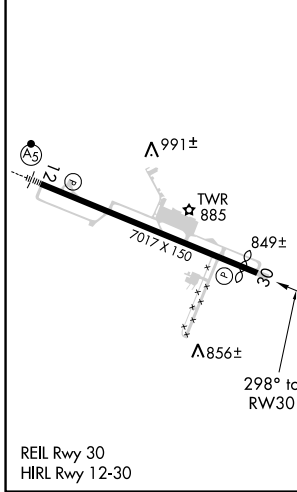
ASR For uncompensated Baro-VNAV systems, LNAV/VNAV NA below 16°C or above 38°C.

MISSED APPROACH: Climb to 1700 then climbing right turn to 3000 direct CROUP and hold.

ATIS 125.2	HUNTINGTON APP CON 119.75 270.1	HUNTINGTON TOWER 118.5 270.1	GND CON 121.9	CLNC DEL 118.05
----------------------	---	--	-------------------------	---------------------------



ELEV 828	TDZE 828
----------	----------



CATEGORY	A	B	C	D
LPV DA		1028- ³ / ₄	200 (200- ³ / ₄)	
LNAV/VNAV DA		1152-1	324 (400-1)	
LNAV MDA	1260-1	432 (400-1)	1260-1 ¹ / ₄	432 (400-1 ¹ / ₄)
CIRCLING	1340-1	512 (600-1)	1340-1 ¹ / ₂ 512 (600-1 ¹ / ₂)	1420-2 592 (600-2)

NE-4, 27 FEB 2020 to 26 MAR 2020

NE-4, 27 FEB 2020 to 26 MAR 2020