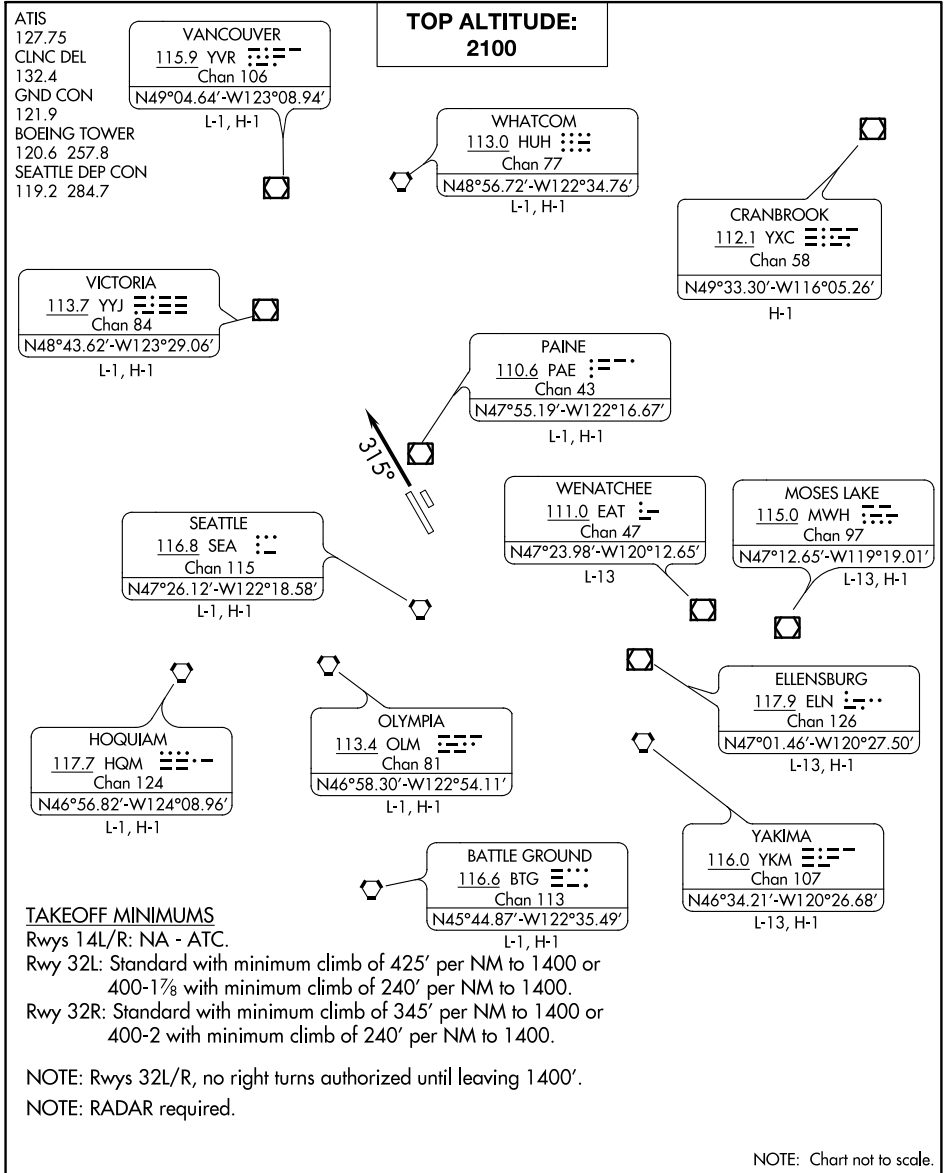


# NEEDLE ONE DEPARTURE

BOEING FIELD/KING COUNTY INTL (BFI)  
SEATTLE, WASHINGTON

AL-384 (FAA)



NW-1, 27 FEB 2020 to 26 MAR 2020

NW-1, 27 FEB 2020 to 26 MAR 2020

### TAKEOFF MINIMUMS

Rwys 14L/R: NA - ATC.

Rwy 32L: Standard with minimum climb of 425' per NM to 1400 or 400-1 $\frac{7}{8}$  with minimum climb of 240' per NM to 1400.

Rwy 32R: Standard with minimum climb of 345' per NM to 1400 or 400-2 with minimum climb of 240' per NM to 1400.

NOTE: Rwys 32L/R, no right turns authorized until leaving 1400'.

NOTE: RADAR required.

### DEPARTURE ROUTE DESCRIPTION

**TAKEOFF RUNWAYS 32L/R:** Climb heading 315°, maintain 2100 or ATC assigned altitude, for RADAR vectors to assigned route/fix, expect clearance to filed altitude within 3 minutes after departure.

# NEEDLE ONE DEPARTURE

SEATTLE, WASHINGTON  
BOEING FIELD/KING COUNTY INTL (BFI)