

VORTAC GVO	APP CRS	Rwy Idg	6052
113.8	279°	TDZE	10
Chan 85		Apt Elev	10

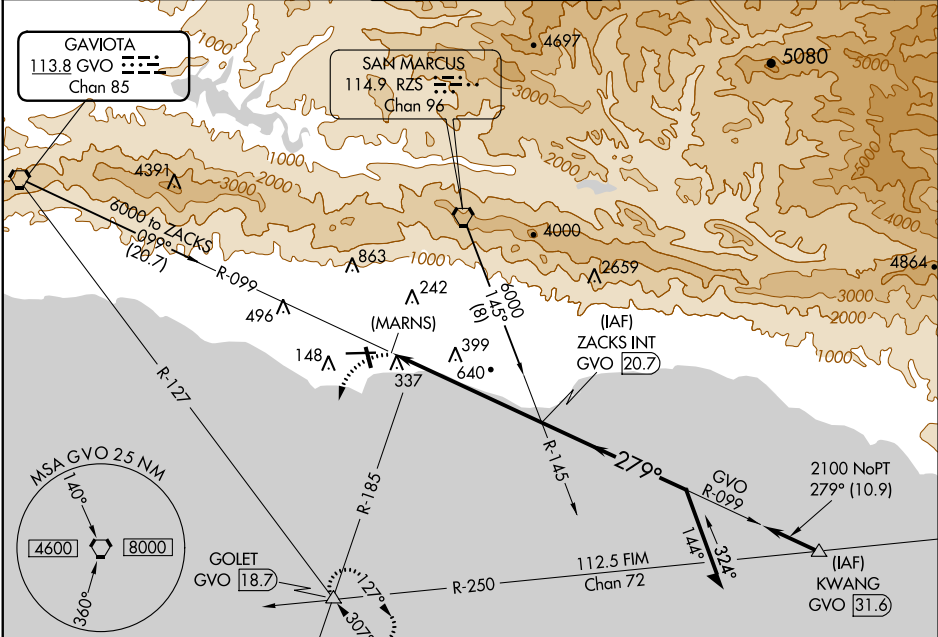
VOR or GPS RWY 25

SANTA BARBARA MUNI (SBA)

⚠ Night landing Rwy 15R NA. Helicopter visibility reduction below 3/4 SM NA. When local altimeter not received, use Oxnard altimeter setting and increase all MDA 100 feet and all Cats B and C visibility 1/4 mile.

MISSED APPROACH: Climbing left turn to 4000 via heading 205° and GVO R-127 to GOLET Int and hold.

ATIS 132.65	SANTA BARBARA APP CON 120.55 319.15 (151°-329°) 125.4 291.1 (330°-150°)	SANTA BARBARA TOWER * 119.7 (CTAF) 0 254.35	GND CON 121.7	CLNC DEL 132.9	UNICOM 122.95
-----------------------	---------------------------------------------------------------------------------------------	-------------------------------------------------------	-------------------------	--------------------------	-------------------------



SW-3, 27 FEB 2020 to 26 MAR 2020

SW-3, 27 FEB 2020 to 26 MAR 2020

ELEV 10	D	TDZE 10
---------	----------	---------

279° 6.5 NM from FAF

111±

15R 15L

6052 X 150

180 X 100

184 X 100

52 X 100

33L 33R

166±

HIRL Rwy 7-25
MIRL Rwy 15R-33L
REL Rwy 15R
REL Rwy 25

FAF to MAP 6 NM

Knots	60	90	120	150	180
Min:Sec	6:00	4:00	3:00	2:24	2:00

4000

hdg 205°

GVO R-127

GOLET

ZACKS INT GVO (20.7)

Remain within 10 NM

099°

3000

279°

2100

≤ 2.96° TCH 45

(MARNIS) GVO (14.7)

0.5 **6 NM**

CATEGORY	A	B	C	D
S-25	920-1 1/4 910 (1000-1 1/4)		920-2 3/4 910 (1000-2 3/4)	920-3 910 (1000-3)
CIRCLING	920-1 1/4 910 (1000-1 1/4)		920-2 3/4 910 (1000-2 3/4)	960-3 950 (1000-3)