

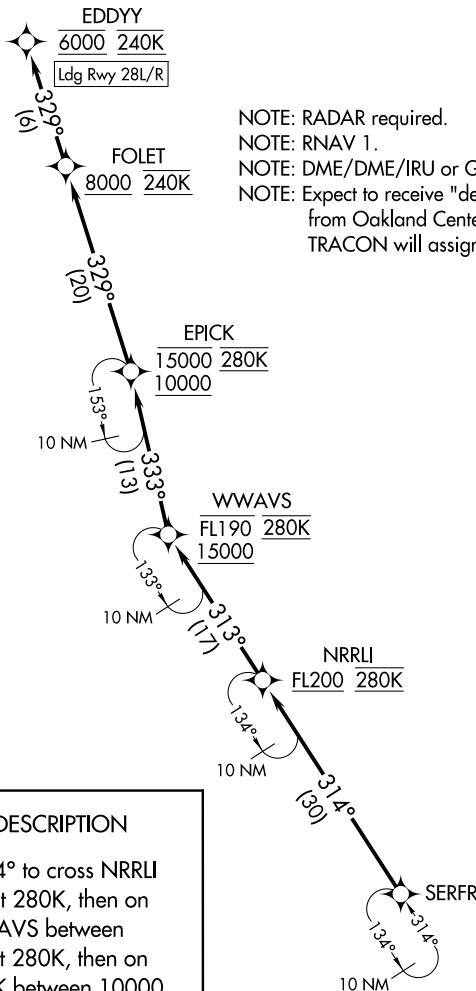
(SERFR.SERFR4) 19339

SERFR FOUR ARRIVAL (RNAV)

AI-375 (FAA)

SAN FRANCISCO INTL (SFO)
SAN FRANCISCO, CALIFORNIA

OAKLAND CENTER
134.55 290.5
NORCAL APP CON
128.575 254.25
D-ATIS
113.7 115.8 118.85
SAN FRANCISCO TOWER
120.5 269.1
GND CON
121.8



NOTE: RADAR required.
NOTE: RNAV 1.
NOTE: DME/DME/IRU or GPS required.
NOTE: Expect to receive "descend via" clearance from Oakland Center. Northern California TRACON will assign landing runway.

ARRIVAL ROUTE DESCRIPTION

From SERFR on track 314° to cross NRRLI at or above FL200 and at 280K, then on track 313° to cross WWAVS between 15000 and FL190 and at 280K, then on track 333° to cross EPICK between 10000 and 15000 and at 280K, then on track 329° to cross FOLET at or above 8000 and at 240K, then on track 329° to cross EDDYY at 6000 and at 240K. Expect assigned instrument approach (Rwy 28L/R).

MAKRS \triangle

STOKD \diamond

NOTE: Chart not to scale.

SERFR FOUR ARRIVAL (RNAV)

(SERFR.SERFR4) 05DEC19

SAN FRANCISCO, CALIFORNIA
SAN FRANCISCO INTL (SFO)

SW-2, 27 FEB 2020 to 26 MAR 2020

SW-2, 27 FEB 2020 to 26 MAR 2020