

LOC/DME I-GWQ <b>111.7</b> Chan <b>54</b>	APP CRS <b>284°</b>	Rwy Idg TDZE Apt Elev	28R <b>11236</b> <b>13</b> <b>13</b>	28L <b>10275</b> <b>13</b> <b>13</b>
---	------------------------	-----------------------------	---	---

# ILS or LOC RWY 28R

SAN FRANCISCO INTL (SFO)

**RNAV 1-GPS or RADAR** required for procedure entry.

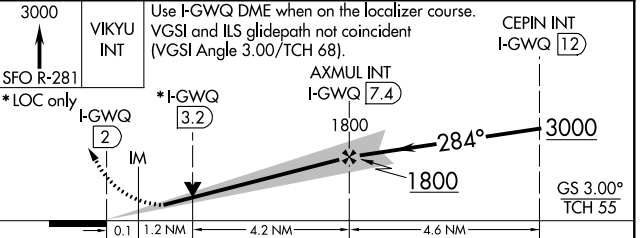
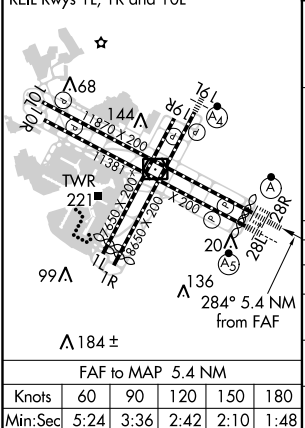
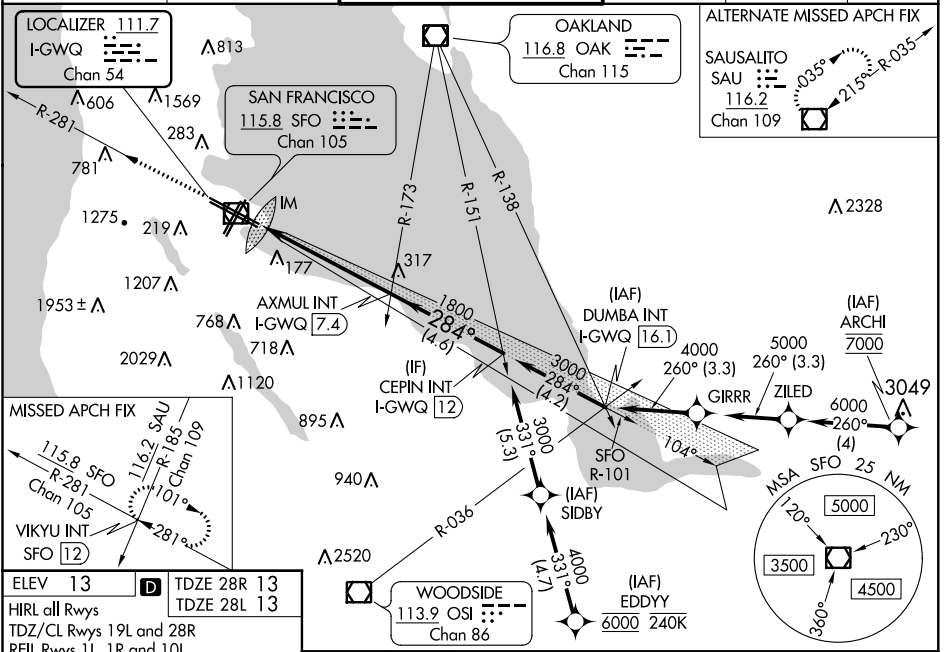
**⚠ Circling NA** to Rwsy 10L, 10R, 19L, and 19R. Circling Rwy 1L, 1R NA at night. For inop ALS increase S-LOC 28R# Cat C/D visibility to 1 1/2 SM. LOC procedure NA during simultaneous operations. Simultaneous approach authorized. Simultaneous operations require use of vertical guidance; maintain last assigned altitude until established on glide slope.

**ALSF-2 Rwy 28R**

**MALSR Rwy 28L**

**MISSED APPROACH:** Climb to 3000 on SFO VOR/DME R-281 to VIKYU INT/SFO 12 DME and hold.  
#Missed approach requires minimum climb of 350 feet per NM to 1900; if unable to meet climb gradient, see ILS or LOC RWY 28L.

D-ATIS <b>113.7 115.8</b> <b>118.85</b>	NORCAL APP CON <b>134.5 338.2</b>	SAN FRANCISCO TOWER <b>120.5 269.1</b>	GND CON <b>121.8</b>	CLNC DEL <b>118.2</b>	CPDLC
---	--------------------------------------	---	-------------------------	--------------------------	-------



CATEGORY	A	B	C	D
S-ILS 28R#	213/18 200 (200-1/2)			
S-LOC 28R#	480/24 467 (500-1/2)		480/50 467 (500-1)	
SIDESTEP# 28L	480/55 467 (500-1)			480-1 1/2 467 (500-1 1/2)
CIRCLING	740-1 727 (800-1)		960-1 1/4 1547 (1600-3)	
	960-1 1/4 947 (1000-1 1/4)		1560-3 1547 (1600-3)	
			NA	