

SAN ANTONIO, TEXAS

ILS or LOC/DME RWY 34

LOC I-OSQ 110.7	APCH CRS 338°	Rwy ldg 11,550 TDZE 660 Arprt Elev 690
---------------------------	-------------------------	---

AL-371 [USAF]

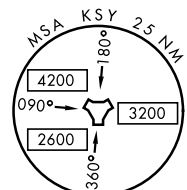
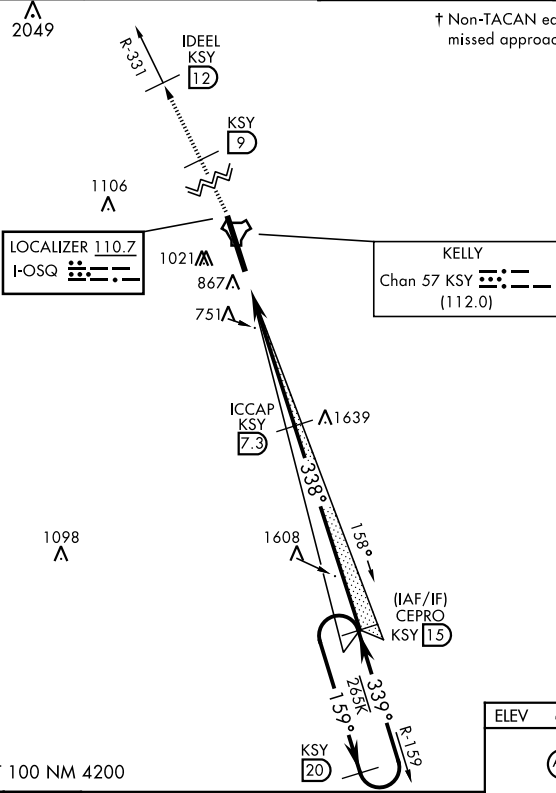
KELLY FLD (KSKF)

▼ * When ALS inop, increase all CAT RVR to 40 and vis to ¾ mile.
 ** When ALS inop, increase all CAT RVR to 55 and vis to 1 mile.
 *** Circling not authorized E of Rwy 16-34.

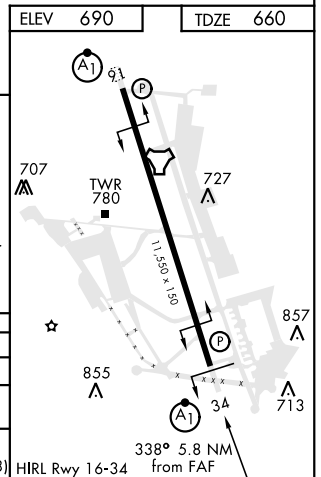
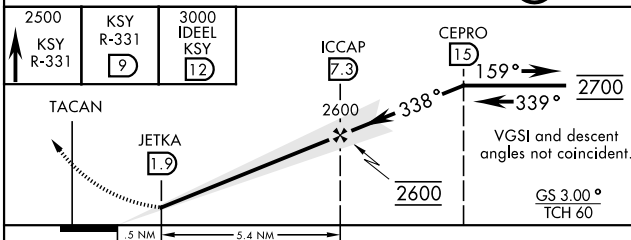
ALSF-1
 † MISSED APPROACH: Climb to 2500 via KSY TACAN R-331 until 9 DME, cross 9 DME at 2500, then continue climb to 3000 to IDEEL/12 DME. Expect ATC instructions.

ATIS 120.45 273.5	SAN ANTONIO APP CON 118.05 353.5	KELLY TOWER 124.3 322.35	GND CON 121.8 289.4
-----------------------------	--	------------------------------------	-------------------------------

† Non-TACAN equipped aircraft expect alternate missed approach instructions.



EMERG SAFE ALT 100 NM 4200



CATEGORY	A	B	C	D	E
S-ILS 34*	860/24		200	(200-½)	
S-LOC/DME 34**	1040/24	380 (400-½)	1040/35	380	(400-¾)
CIRCLING***	1220-1	1300-1	1360-1¾	1440-2½	1900-3
	530 (600-1)	610 (700-1)	670 (700-1¾)	750 (800-2½)	1210 (1300-3)

SAN ANTONIO, TEXAS

29°23'N-98°35'W

KELLY FLD (KSKF)

Amtd 1 10OCT19

ILS or LOC/DME RWY 34

SC-3, 27 FEB 2020 to 26 MAR 2020

SC-3, 27 FEB 2020 to 26 MAR 2020