

HI-TACAN RWY 16

TACAN KSY Chan 57	APCH CRS 151°	Rwy ldg 11,550 TDZE 690 Arpt Elev 690
----------------------	------------------	---

JAL-371 [USAF]

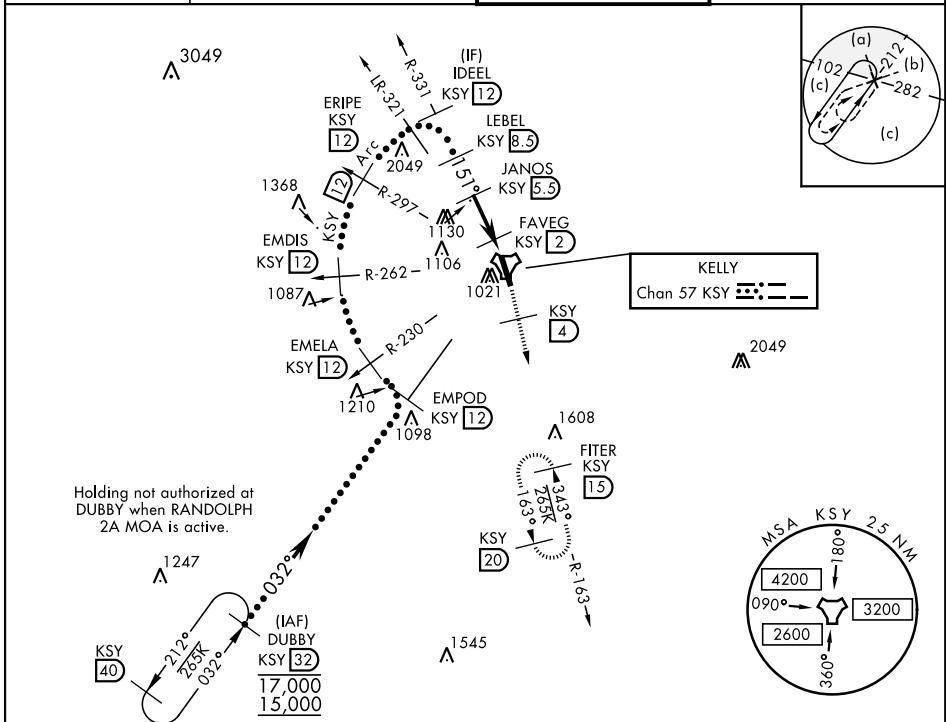
KELLY FLD (KSKF)

▼ * When ALS inop, increase CAT CDE
RVR to 60 and vis to 1 1/8 miles.
** Circling not authorized E of Rwy 16-34.

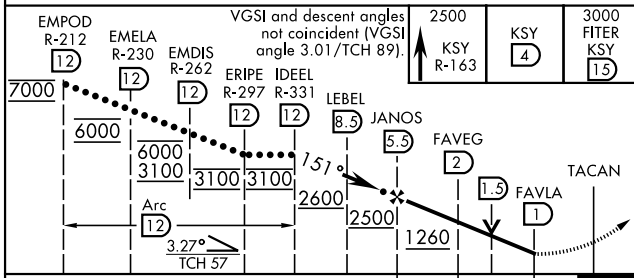


MISSED APPROACH: Climb to 2500 via KSY TACAN R-163 until 4 DME, then continue climb to 3000 to FITER/15 DME and hold.

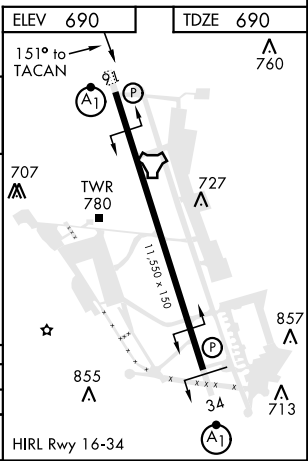
ATIS 120.45 273.5	SAN ANTONIO APP CON 118.05 353.5	KELLY TOWER 124.3 322.35	GND CON 121.8 289.4
----------------------	-------------------------------------	-----------------------------	------------------------



EMERG SAFE ALT 100 NM 4200



EMPOD R-212 (12)	EMELA R-230 (12)	EMDIS R-262 (12)	ERIPLE IDEEL R-297 R-331 (12)	LEBEL (8.3)	JANOS (5.5)	FAVEG (2)	FAVLA (1)	TACAN				
<table border="1"> <tr> <td>2500</td> <td>3000</td> </tr> <tr> <td>KSY R-163</td> <td>FITER KSY (15)</td> </tr> </table>								2500	3000	KSY R-163	FITER KSY (15)	
2500	3000											
KSY R-163	FITER KSY (15)											
CATEGORY	C	D	E									
S-16*	1100/40	410 (500-3/4)										
CIRCLING**	1360-1 3/4 670 (700-1 3/4)	1440-2 1/2 750 (800-2 1/2)	1900-3 1210 (1300-3)									



HI-TACAN RWY 16

SC-3, 27 FEB 2020 to 26 MAR 2020

SC-3, 27 FEB 2020 to 26 MAR 2020