

HI-ILS or LOC/DME RWY 34

LOC I-OSQ 110.7	APCH CRS 338°	Rwy ldg TDZE 660 Arpt Elev 690
---------------------------	-------------------------	--

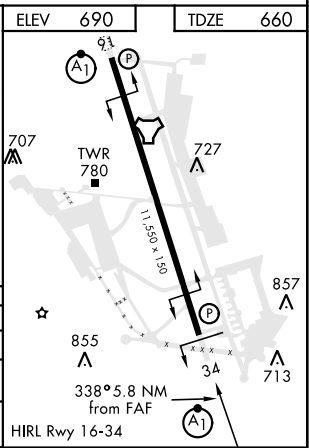
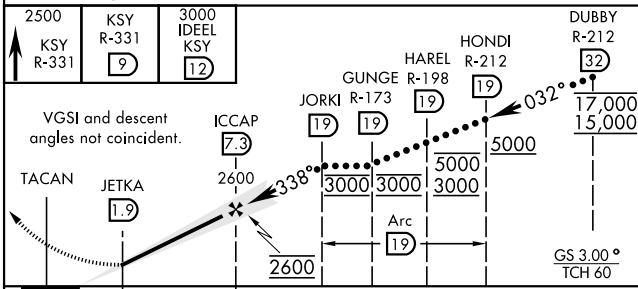
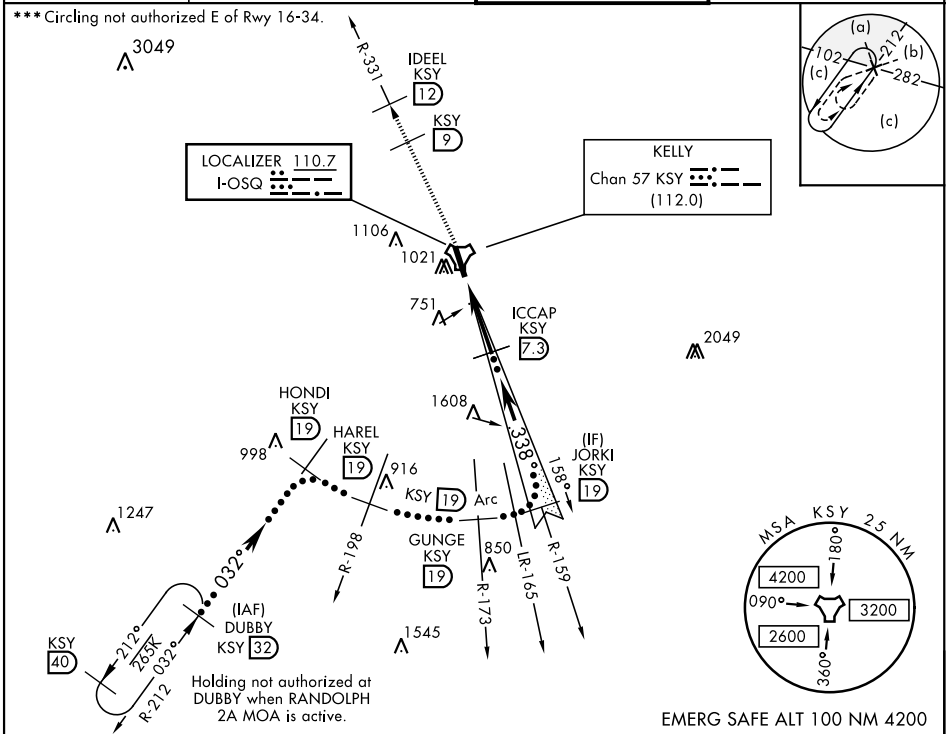
JAL-371 [USAF]

KELLY FLD (KSKF)

▼ * When ALS inop, increase CAT CDE RVR to 40 and vis to 3/4 mile.
 ** When ALS inop, increase CAT CDE RVR to 55 and vis to 1 mile.

ALSF-1 MISSED APPROACH: Climbing to 2500 via KSY TACAN R-331 until 9 DME, cross 9 DME at 2500, then continue climb to 3000 to IDEEL/12.0 DME. Expect ATC instructions.

ATIS 120.45 273.5	SAN ANTONIO APP CON 118.05 353.5	KELLY TOWER 124.3 322.35	GND CON 121.8 289.4
-----------------------------	--	------------------------------------	-------------------------------



CATEGORY	C	D	E
S-ILS 34*	860/24	200	(200-1/2)
S-LOC/DME 34**	1040/35	380	(400-3/4)
CIRCLING***	1360-134 670 (700-134)	1440-21/2 750 (800-21/2)	1900-3 1210 (1300-3)

HI-ILS or LOC/DME RWY 34

SC-3, 27 FEB 2020 to 26 MAR 2020

SC-3, 27 FEB 2020 to 26 MAR 2020