

LOC/DME I-PXY <b>111.5</b> Chan <b>52</b>	APP CRS <b>256°</b>	Rwy Idg <b>7867</b> TDZE <b>683</b> Apt Elev <b>729</b>
---	------------------------	---

# LOC RWY 25L

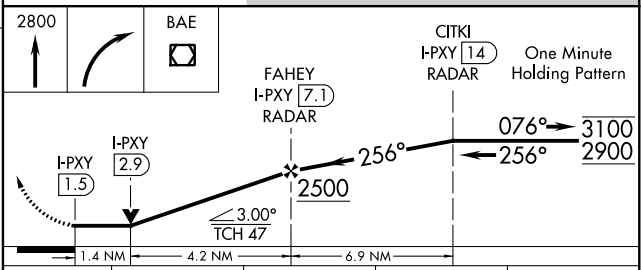
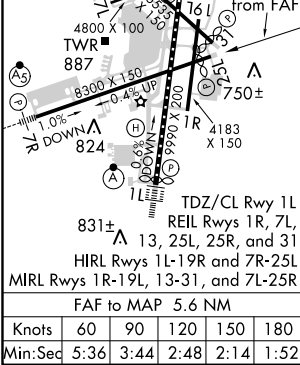
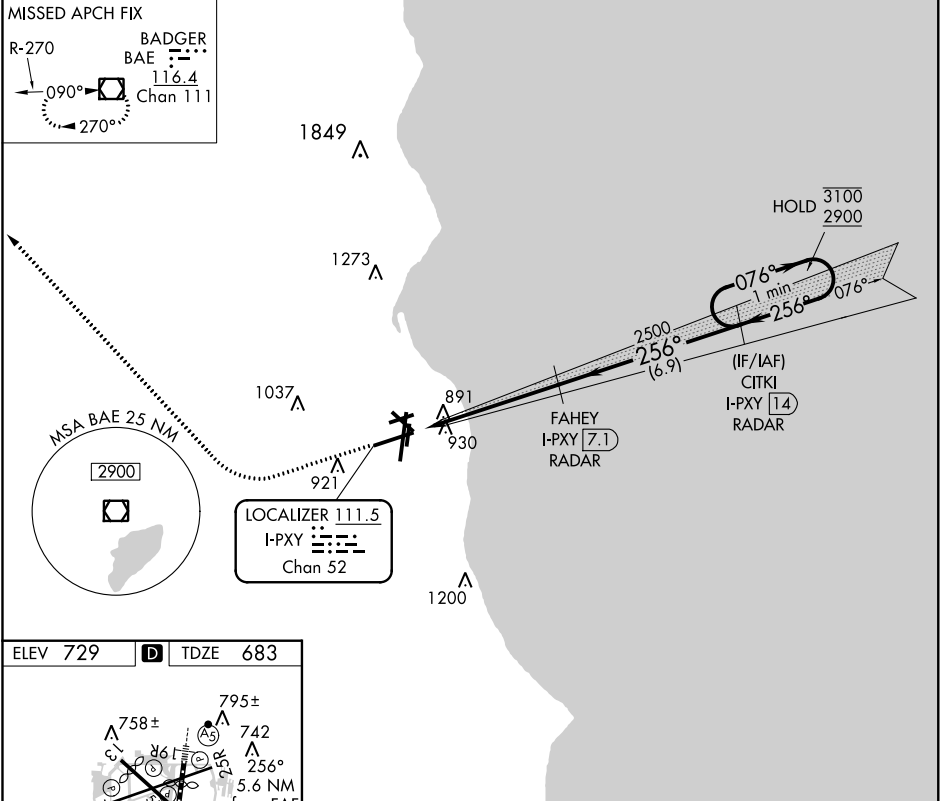
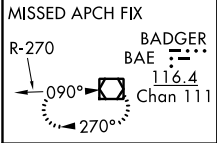
GENERAL MITCHELL INTL (MKE)

RADAR required for procedure entry. DME or RADAR required.

MISSED APPROACH: Climb to 2800 then right turn direct BAE VOR/DME and hold.

Rwy 25L helicopter visibility reduction below 3/4 SM NA.

D-ATIS <b>126.4</b>	MILWAUKEE APP CON <b>126.5 307.0</b>	MILWAUKEE TOWER <b>124.575 269.05</b>	GND CON <b>121.8 263.125</b>	CLNC DEL <b>120.8</b>	CPDLC
------------------------	---	--	---------------------------------	--------------------------	-------



CATEGORY	A	B	C	D
S-LOC 25L	1160-1	477 (500-1)	1160-1 3/8	477 (500-1 3/8)
<input checked="" type="checkbox"/> CIRCLING	1240-1	511 (600-1)	1240-1 1/2	1360-2 631 (700-2)

MILWAUKEE, WISCONSIN  
Amdt 6A 03JAN19

42°57'N-87°54'W

# GENERAL MITCHELL INTL (MKE) LOC RWY 25L

EC-3, 27 FEB 2020 to 26 MAR 2020

EC-3, 27 FEB 2020 to 26 MAR 2020