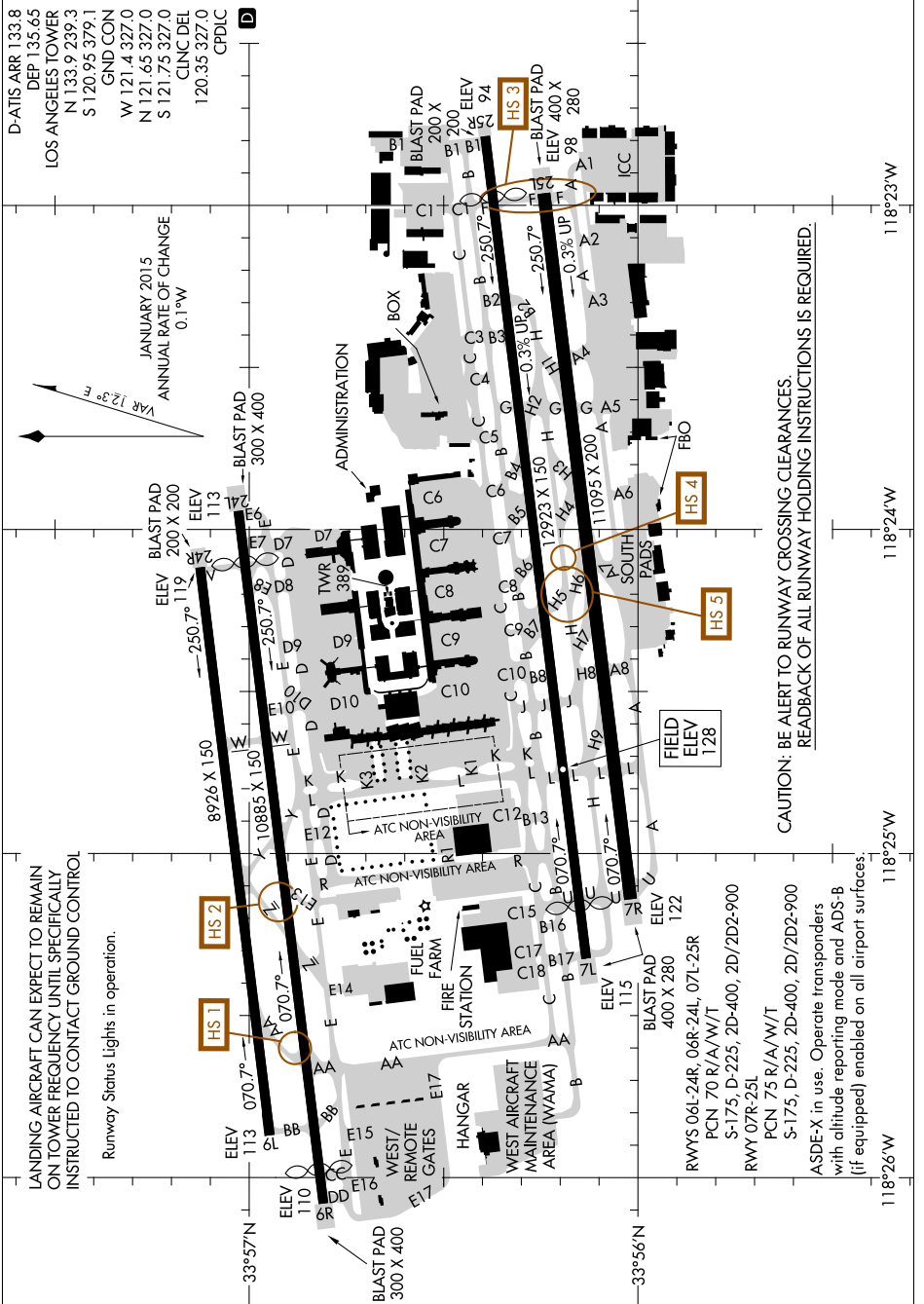


AIRPORT DIAGRAM

AL-237 (FAA)

LOS ANGELES INTL (LAX)
LOS ANGELES, CALIFORNIA

SW-3, 27 FEB 2020 to 26 MAR 2020



LANDING AIRCRAFT CAN EXPECT TO REMAIN ON TOWER FREQUENCY UNTIL SPECIFICALLY INSTRUCTED TO CONTACT GROUND CONTROL

Runway Status Lights in operation.

CAUTION: BE ALERT TO RUNWAY CROSSING CLEARANCES
READBACK OF ALL RUNWAY HOLDING INSTRUCTIONS IS REQUIRED.

AIRPORT DIAGRAM

LOS ANGELES, CALIFORNIA
LOS ANGELES INTL (LAX)

SW-3, 27 FEB 2020 to 26 MAR 2020