

HOODO SIX DEPARTURE (RNAV)

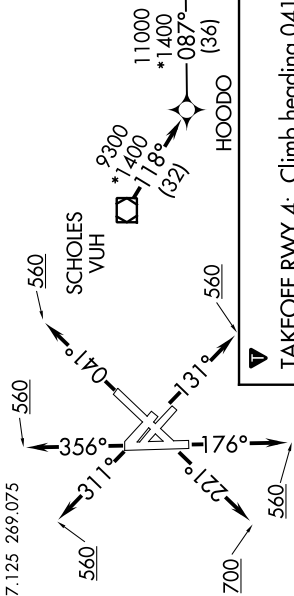
SC-5, 27 FEB 2020 to 26 MAR 2020

TOP ALTITUDE:
16000

TAKEOFF MINIMUMS
Rwys 4, 13L/R, 17, 31L/R, 35: Standard with minimum climb of 500' per NM to 560.
Rwy 22: Standard with minimum climb of 500' per NM to 700.

- NOTE: RNAV 1.
- NOTE: RADAR required.
- NOTE: ATC assigned only.
- NOTE: DME/DME/IRU or GPS required.
- NOTE: For non-GPS equipped aircraft, LCH, ILA, TBD, and LEV DME's must be operational.

D-AITS
124.6
CLNC DEL
125.45
CPDC
GND CON
121.9
HOBBY TOWER
118.7 256.9
HOUSTON DEP CON
127.125 269.075



DEPARTURE ROUTE DESCRIPTION

- TAKEOFF RWY 4: Climb heading 041° to 560, for RADAR vectors to VUH VOR/DME, thence
- TAKEOFF RWYS 13L/R: Climb on heading 131° to 560, for RADAR vectors to VUH VOR/DME, thence
- TAKEOFF RWY 17: Climb on heading 176° to 560, for RADAR vectors to VUH VOR/DME, thence
- TAKEOFF RWY 22: Climb on heading 221° to 700, for RADAR vectors to VUH VOR/DME, thence
- TAKEOFF RWYS 31L/R: Climb on heading 311° to 560, for RADAR vectors to VUH VOR/DME, thence
- TAKEOFF RWY 35: Climb on heading 356° to 560, for RADAR vectors to VUH VOR/DME, thence

. . . . on track 118° to HOODO, then on (transition). Maintain 16000.
Expect filed altitude 10 minutes after departure.

- BOWFN TRANSITION (HOODO6.BOWFN)
- CFOOD TRANSITION (HOODO6.CFOOD)
- HARVEY TRANSITION (HOODO6.HRV)
- LEEVILLE TRANSITION (HOODO6.LEV)
- SBIRD TRANSITION (HOODO6.SBIRD)

NOTE: Chart not to scale.

SC-5, 27 FEB 2020 to 26 MAR 2020