

CRIED NINE DEPARTURE

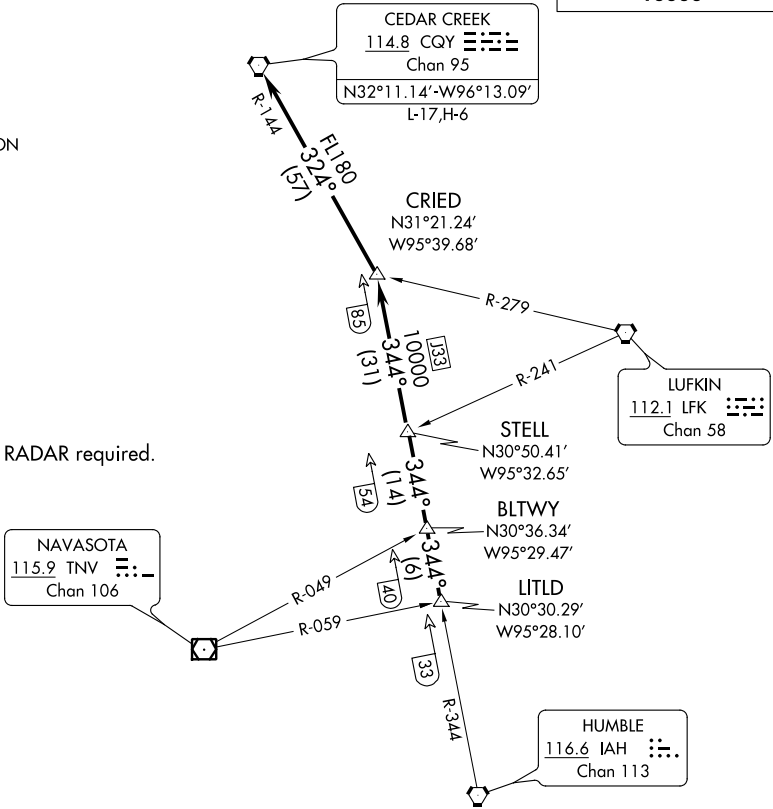
AL-198 (FAA)

WILLIAM P HOBBY (HOU)
HOUSTON, TEXAS

D-ATIS
124.6
CLNC DEL
125.45
CPDLC
GND CON
121.9
HOBBY TOWER
118.7 256.9
HOUSTON DEP CON
132.25 285.425

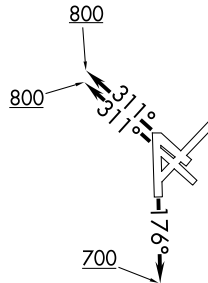
**TOP ALTITUDE:
16000**

NOTE: RADAR required.



TAKEOFF MINIMUMS

- Rwys 13L/R, 31L/R, 35: Standard.
- Rwy 4: 300-1 or standard with minimum climb of 270' per NM to 300.
- Rwy 17: 300-1.
- Rwy 22: Standard with minimum climb of 290' per NM to 1500.



(NARRATIVE ON FOLLOWING PAGE)

NOTE: Chart not to scale.

CRIED NINE DEPARTURE

SC-5, 27 FEB 2020 to 26 MAR 2020

SC-5, 27 FEB 2020 to 26 MAR 2020