

APP CRS	Rwy Idg	<b>4835</b>
<b>310°</b>	TDZE	<b>930</b>
	Apt Elev	<b>952</b>

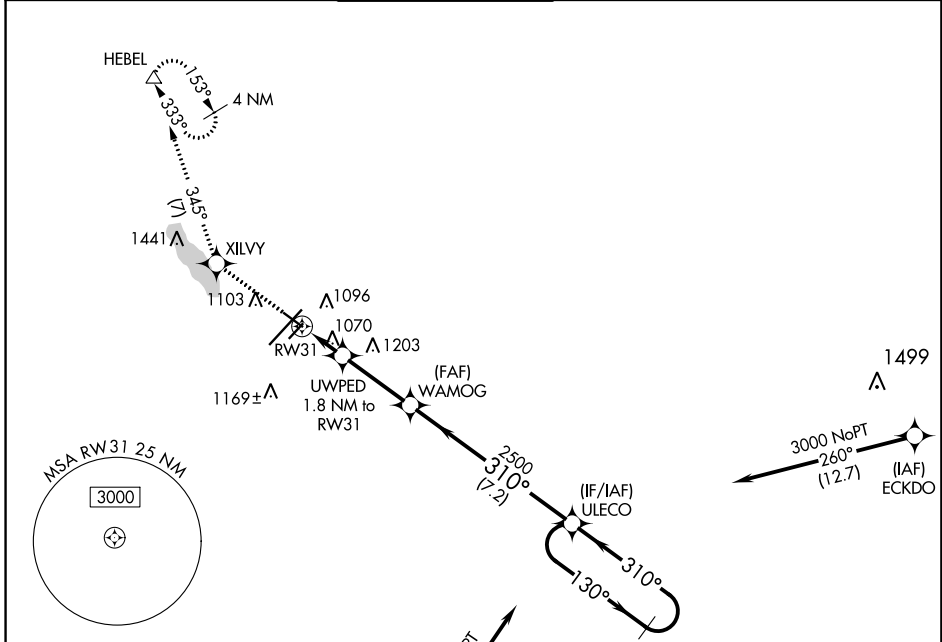
# RNAV (GPS) RWY 31

W K KELLOGG (BTL)

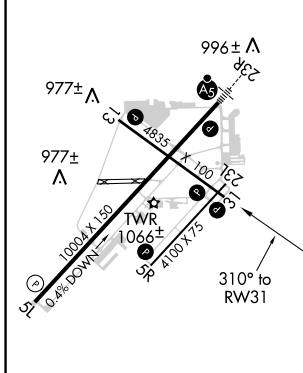
**⚠** Circling NA to Rwys 5R and 23L. Rwy 31 helicopter visibility reduction below 1 SM NA. DME/DME RNP-0.3 NA. Procedure NA at night.

MISSED APPROACH: Climb to 3000 direct XILVY and on 345° track to HEBEL and hold.

ATIS	GREAT LAKES APP CON ★	BATTLE CREEK TOWER ★	GND CON	UNICOM	CTAF
<b>128.325</b>	<b>119.2 239.25</b>	<b>126.825</b>	<b>121.7</b>	<b>122.95</b>	<b>126.825</b> <b>Ⓢ</b>



ELEV 952	<b>D</b>	TDZE 930
----------	----------	----------



3000	XILVY	HEBEL	4 NM Holding Pattern
↑	✧ tr 345°	△	
UWPED 1.8 NM to RW31	WAMOG	ULECO	
RW31	3.00 TCH 40	2500	
1540	310°	130°	3000
1.8 NM	3 NM	7.2 NM	
VGSI and descent angles not coincident (VGSI Angle 3.00/TCH 25).			

CATEGORY	A	B	C	D
LNAV MDA	1320-1	390 (400-1)	1320-1½	390 (400-1½)
<b>C</b> CIRCLING	1420-1 468 (500-1)	1480-1 528 (600-1)	1520-1½ 568 (600-1½)	1520-2 568 (600-2)

HIRL Rwy 5L-23R **Ⓢ**  
 MIRL Rwys 13-31 and 5R-23L **Ⓢ**  
 REIL Rwys 5L, 5R, 13, 23L and 31L **Ⓢ**

EC-1, 27 FEB 2020 to 26 MAR 2020

EC-1, 27 FEB 2020 to 26 MAR 2020